



[Go to Product page](#)

Datasheet for ABIN654684

anti-HIST1H2BJ antibody (AA 57-86)

4 Images

Overview

Quantity:	400 µL
Target:	HIST1H2BJ
Binding Specificity:	AA 57-86
Reactivity:	Human
Host:	Rabbit
Clonality:	Polyclonal
Conjugate:	This HIST1H2BJ antibody is un-conjugated
Application:	Western Blotting (WB), Flow Cytometry (FACS), Immunohistochemistry (Paraffin-embedded Sections) (IHC (p))

Product Details

Immunogen:	This HIST1H2B antibody is generated from rabbits immunized with a KLH conjugated synthetic peptide between 57-86 amino acids from the Central region of human HIST1H2BJ.
Clone:	RB28555
Isotype:	Ig Fraction
Predicted Reactivity:	X, Rat, M, B, Pr, C, Zf
Purification:	This antibody is purified through a protein A column, followed by peptide affinity purification.

Target Details

Target:	HIST1H2BJ
---------	-----------

Target Details

Alternative Name: [HIST1H2BJ \(HIST1H2BJ Products\)](#)

Background: Histones are basic nuclear proteins that are responsible for the nucleosome structure of the chromosomal fiber in eukaryotes. Two molecules of each of the four core histones (H2A, H2B, H3, and H4) form an octamer, around which approximately 146 bp of DNA is wrapped in repeating units, called nucleosomes. The linker histone, H1, interacts with linker DNA between nucleosomes and functions in the compaction of chromatin into higher order structures. This gene is intronless and encodes a member of the histone H2B family. Transcripts from this gene lack polyA tails but instead contain a palindromic termination element. This gene is found in the histone microcluster on chromosome 6p21.33. [provided by RefSeq].

Molecular Weight: 13904

Gene ID: 8970

NCBI Accession: [NP_066402](#)

UniProt: [P06899](#)

Application Details

Application Notes: WB: 1:1000. WB: 1:1000. IHC-P: 1:50~100. FC: 1:10~50

Restrictions: For Research Use only

Handling

Format: Liquid

Buffer: Purified polyclonal antibody supplied in PBS with 0.09 % (W/V) sodium azide.

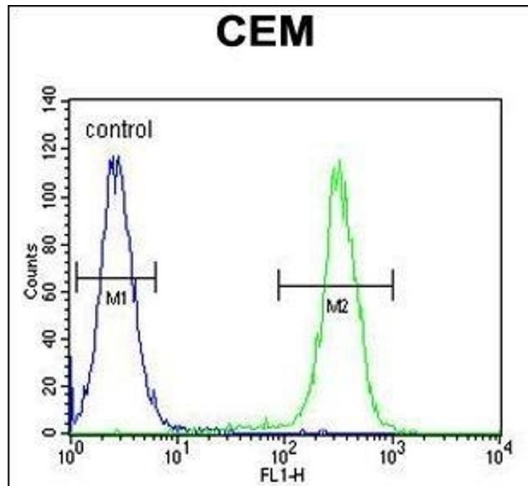
Preservative: Sodium azide

Precaution of Use: This product contains Sodium azide: a POISONOUS AND HAZARDOUS SUBSTANCE which should be handled by trained staff only.

Storage: 4 °C, -20 °C

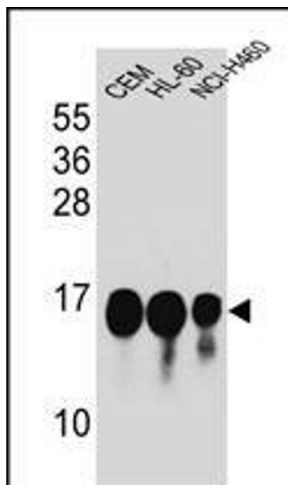
Storage Comment: Maintain refrigerated at 2-8 °C for up to 6 months. For long term storage store at -20 °C in small aliquots to prevent freeze-thaw cycles.

Expiry Date: 6 months



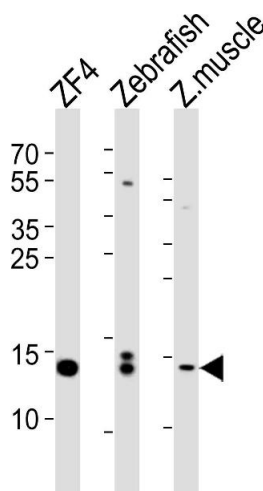
Flow Cytometry

Image 1. HIST1H2B Antibody (Center) (ABIN654684 and ABIN2844377) flow cytometric analysis of CEM cells (right histogram) compared to a negative control cell (left histogram). FITC-conjugated goat-anti-rabbit secondary antibodies were used for the analysis.



Western Blotting

Image 2. HIST1H2B Antibody (Center) (ABIN654684 and ABIN2844377) western blot analysis in CEM, HL-60, NCI- cell line lysates (35 µg/lane). This demonstrates the HIST1H2B antibody detected the HIST1H2B protein (arrow).



Western Blotting

Image 3. Western blot analysis of lysates from ZF4 cell line, Zebrafish, zebra fish muscle tissue lysate (from left to right), using HIST1H2BJ Antibody (Center) (ABIN654684 and ABIN2844377). (ABIN654684 and ABIN2844377) was diluted at 1:1000 at each lane. A goat anti-rabbit IgG H&L(HRP) at 1:5000 dilution was used as the secondary antibody. Lysates at 35 µg per lane.

Please check the [product details page](#) for more images. Overall 4 images are available for ABIN654684.