

Datasheet for ABIN654689
anti-IGSF1 antibody (C-Term)[Go to Product page](#)

2 Images

Overview

Quantity:	400 µL
Target:	IGSF1 (INHBP)
Binding Specificity:	AA 1270-1297, C-Term
Reactivity:	Human, Mouse
Host:	Rabbit
Clonality:	Polyclonal
Conjugate:	This IGSF1 antibody is un-conjugated
Application:	Western Blotting (WB), Immunohistochemistry (Paraffin-embedded Sections) (IHC (p))

Product Details

Immunogen:	This IGSF1 antibody is generated from rabbits immunized with a KLH conjugated synthetic peptide between 1270-1297 amino acids from the C-terminal region of human IGSF1.
Clone:	RB24655
Isotype:	Ig Fraction
Predicted Reactivity:	Rat
Purification:	This antibody is purified through a protein A column, followed by peptide affinity purification.

Target Details

Target:	IGSF1 (INHBP)
Alternative Name:	IGSF1 (INHBP Products)

Target Details

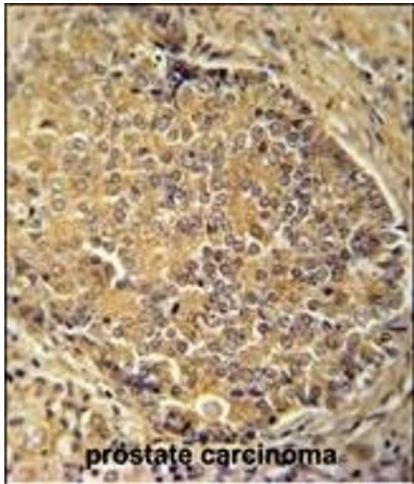
Background:	This gene encodes a member of the immunoglobulin-like domain-containing superfamily. Proteins in this superfamily contain varying numbers of immunoglobulin-like domains and are thought to participate in the regulation of interactions between cells. Multiple transcript variants encoding different isoforms have been found for this gene.
Molecular Weight:	148936
Gene ID:	3547
NCBI Accession:	NP_001164432 , NP_001164433 , NP_001164434 , NP_001546 , NP_991402
UniProt:	Q8N6C5

Application Details

Application Notes:	WB: 1:1000. IHC-P: 1:50~100
Restrictions:	For Research Use only

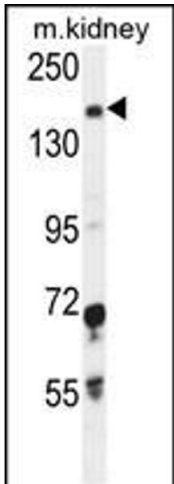
Handling

Format:	Liquid
Buffer:	Purified polyclonal antibody supplied in PBS with 0.09 % (W/V) sodium azide.
Preservative:	Sodium azide
Precaution of Use:	This product contains Sodium azide: a POISONOUS AND HAZARDOUS SUBSTANCE which should be handled by trained staff only.
Storage:	4 °C,-20 °C
Storage Comment:	Maintain refrigerated at 2-8 °C for up to 6 months. For long term storage store at -20 °C in small aliquots to prevent freeze-thaw cycles.
Expiry Date:	6 months



Immunohistochemistry (Paraffin-embedded Sections)

Image 1. IGSF1 antibody (C-term) (ABIN654689 and ABIN2844381) immunohistochemistry analysis in formalin fixed and paraffin embedded human prostate carcinoma followed by peroxidase conjugation of the secondary antibody and DAB staining. This data demonstrates the use of the IGSF1 antibody (C-term) for immunohistochemistry. Clinical relevance has not been evaluated.



Western Blotting

Image 2. IGSF1 Antibody (C-term) (ABIN654689 and ABIN2844381) western blot analysis in mouse kidney tissue lysates (35 µg/lane). This demonstrates the IGSF1 antibody detected the IGSF1 protein (arrow).