



Datasheet for ABIN654692
anti-PRSS1 antibody (AA 81-107)



[Go to Product page](#)

2 Images

Overview

Quantity:	400 µL
Target:	PRSS1
Binding Specificity:	AA 81-107
Reactivity:	Human
Host:	Rabbit
Clonality:	Polyclonal
Conjugate:	This PRSS1 antibody is un-conjugated
Application:	Western Blotting (WB), Immunohistochemistry (Paraffin-embedded Sections) (IHC (p))

Product Details

Immunogen:	This PRSS1 antibody is generated from rabbits immunized with a KLH conjugated synthetic peptide between 81-107 amino acids from the Central region of human PRSS1.
Clone:	RB24880
Isotype:	Ig Fraction
Purification:	This antibody is purified through a protein A column, followed by peptide affinity purification.

Target Details

Target:	PRSS1
Alternative Name:	PRSS1 (PRSS1 Products)
Background:	This gene encodes a trypsinogen, which is a member of the trypsin family of serine proteases.

Target Details

This enzyme is secreted by the pancreas and cleaved to its active form in the small intestine. It is active on peptide linkages involving the carboxyl group of lysine or arginine. Mutations in this gene are associated with hereditary pancreatitis. This gene and several other trypsinogen genes are localized to the T cell receptor beta locus on chromosome 7.

Molecular Weight: 26558

Gene ID: 5644

NCBI Accession: [NP_002760](#)

UniProt: [P07477](#)

Application Details

Application Notes: WB: 1:1000. IHC-P: 1:100

Restrictions: For Research Use only

Handling

Format: Liquid

Buffer: Purified polyclonal antibody supplied in PBS with 0.09 % (W/V) sodium azide.

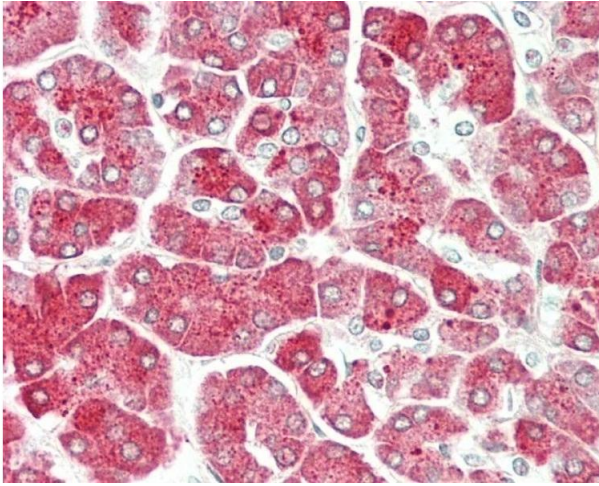
Preservative: Sodium azide

Precaution of Use: This product contains Sodium azide: a POISONOUS AND HAZARDOUS SUBSTANCE which should be handled by trained staff only.

Storage: 4 °C,-20 °C

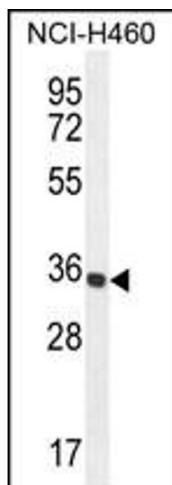
Storage Comment: Maintain refrigerated at 2-8 °C for up to 6 months. For long term storage store at -20 °C in small aliquots to prevent freeze-thaw cycles.

Expiry Date: 6 months



Immunohistochemistry (Paraffin-embedded Sections)

Image 1. Formalin-fixed and paraffin-embedded H.pancreas tissue reacted with PRSS1 Antibody (Center) (ABIN654692 and ABIN2844384).



Western Blotting

Image 2. PRSS1 Antibody (Center) (ABIN654692 and ABIN2844384) western blot analysis in NCI- cell line lysates (35 µg/lane). This demonstrates the PRSS1 antibody detected the PRSS1 protein (arrow).