

Datasheet for ABIN654697
anti-WWC1 antibody (N-Term)[Go to Product page](#)

1 Image

Overview

Quantity:	400 µL
Target:	WWC1
Binding Specificity:	AA 286-313, N-Term
Reactivity:	Human
Host:	Rabbit
Clonality:	Polyclonal
Conjugate:	This WWC1 antibody is un-conjugated
Application:	Western Blotting (WB)

Product Details

Immunogen:	This WWC1 antibody is generated from rabbits immunized with a KLH conjugated synthetic peptide between 286-313 amino acids from the N-terminal region of human WWC1.
Clone:	RB24886
Isotype:	Ig Fraction
Predicted Reactivity:	M
Purification:	This antibody is purified through a protein A column, followed by peptide affinity purification.

Target Details

Target:	WWC1
Alternative Name:	WWC1 (WWC1 Products)

Target Details

Background: The protein encoded by this gene is a cytoplasmic phosphoprotein that interacts with PRKC-zeta and dynein light chain-1. Alleles of this gene have been found that enhance memory in some individuals. Three transcript variants encoding different isoforms have been found for this gene.

Molecular Weight: 125301

Gene ID: 23286

NCBI Accession: [NP_001155133](#), [NP_001155134](#), [NP_056053](#)

UniProt: [Q8IX03](#)

Application Details

Application Notes: WB: 1:1000

Restrictions: For Research Use only

Handling

Format: Liquid

Buffer: Purified polyclonal antibody supplied in PBS with 0.09 % (W/V) sodium azide.

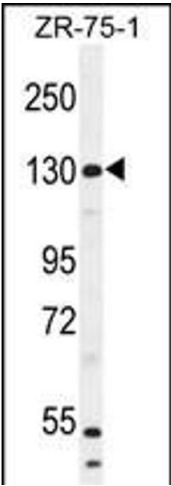
Preservative: Sodium azide

Precaution of Use: This product contains Sodium azide: a POISONOUS AND HAZARDOUS SUBSTANCE which should be handled by trained staff only.

Storage: 4 °C, -20 °C

Storage Comment: Maintain refrigerated at 2-8 °C for up to 6 months. For long term storage store at -20 °C in small aliquots to prevent freeze-thaw cycles.

Expiry Date: 6 months



Western Blotting

Image 1. WWC1 Antibody (N-term) (ABIN654697 and ABIN2844390) western blot analysis in ZR-75-1 cell line lysates (35 µg/lane). This demonstrates the WWC1 antibody detected the WWC1 protein (arrow).