

Datasheet for ABIN654698
anti-RPH3AL antibody (C-Term)[Go to Product page](#)

2 Images

Overview

Quantity:	400 µL
Target:	RPH3AL
Binding Specificity:	AA 208-237, C-Term
Reactivity:	Human
Host:	Rabbit
Clonality:	Polyclonal
Conjugate:	This RPH3AL antibody is un-conjugated
Application:	Western Blotting (WB), Immunohistochemistry (Paraffin-embedded Sections) (IHC (p))

Product Details

Immunogen:	This RPH3AL antibody is generated from rabbits immunized with a KLH conjugated synthetic peptide between 208-237 amino acids from the C-terminal region of human RPH3AL.
Clone:	RB24121
Isotype:	Ig Fraction
Purification:	This antibody is purified through a protein A column, followed by peptide affinity purification.

Target Details

Target:	RPH3AL
Alternative Name:	RPH3AL (RPH3AL Products)
Background:	The protein encoded by this gene plays a direct regulatory role in calcium-ion-dependent

Target Details

exocytosis in both endocrine and exocrine cells and plays a key role in insulin secretion by pancreatic cells. This gene is likely a tumor suppressor. Alternative splicing results in multiple transcript variants encoding distinct isoforms.

Molecular Weight: 34464

Gene ID: 9501

NCBI Accession: [NP_001177340](#), [NP_001177341](#), [NP_001177342](#), [NP_008918](#)

UniProt: [Q9UNE2](#)

Pathways: [Carbohydrate Homeostasis](#), [Regulation of G-Protein Coupled Receptor Protein Signaling](#)

Application Details

Application Notes: WB: 1:1000. IHC-P: 1:50~100

Restrictions: For Research Use only

Handling

Format: Liquid

Buffer: Purified polyclonal antibody supplied in PBS with 0.09 % (W/V) sodium azide.

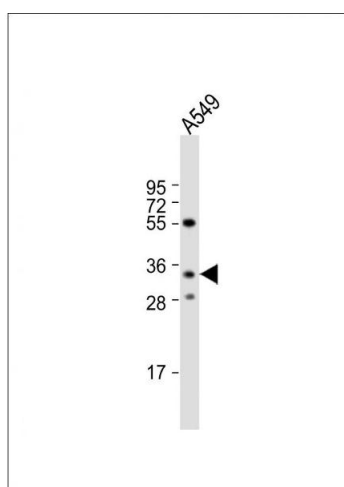
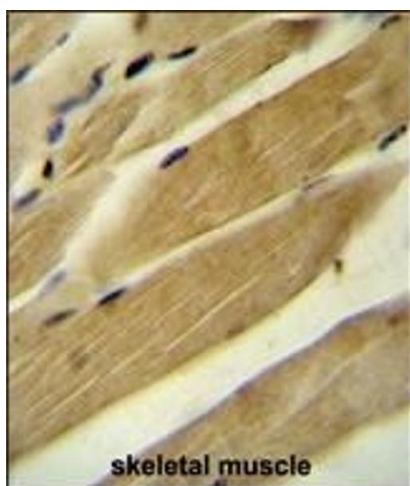
Preservative: Sodium azide

Precaution of Use: This product contains Sodium azide: a POISONOUS AND HAZARDOUS SUBSTANCE which should be handled by trained staff only.

Storage: 4 °C,-20 °C

Storage Comment: Maintain refrigerated at 2-8 °C for up to 6 months. For long term storage store at -20 °C in small aliquots to prevent freeze-thaw cycles.

Expiry Date: 6 months



Immunohistochemistry (Paraffin-embedded Sections)

Image 1. RPH3AL Antibody (C-term) (ABIN654698 and ABIN2844391) immunohistochemistry analysis in formalin fixed and paraffin embedded human skeletal muscle followed by peroxidase conjugation of the secondary antibody and DAB staining. This data demonstrates the use of the RPH3AL Antibody (C-term) for immunohistochemistry. Clinical relevance has not been evaluated.

Western Blotting

Image 2. Anti-RPH3AL Antibody (C-term) at 1:1000 dilution + A549 whole cell lysate Lysates/proteins at 20 µg per lane. Secondary Goat Anti-Rabbit IgG, (H+L), Peroxidase conjugated at 1/10000 dilution. Predicted band size : 34 kDa Blocking/Dilution buffer: 5 % NFDM/TBST.