

Datasheet for ABIN654701
anti-TMLHE antibody (N-Term)[Go to Product page](#)

1 Image

Overview

Quantity:	400 µL
Target:	TMLHE
Binding Specificity:	AA 120-149, N-Term
Reactivity:	Human
Host:	Rabbit
Clonality:	Polyclonal
Conjugate:	This TMLHE antibody is un-conjugated
Application:	Western Blotting (WB)

Product Details

Immunogen:	This TMLHE antibody is generated from rabbits immunized with a KLH conjugated synthetic peptide between 120-149 amino acids from the N-terminal region of human TMLHE.
Clone:	RB24149
Isotype:	Ig Fraction
Predicted Reactivity:	B, M
Purification:	This antibody is purified through a protein A column, followed by peptide affinity purification.

Target Details

Target:	TMLHE
Alternative Name:	TMLHE (TMLHE Products)

Target Details

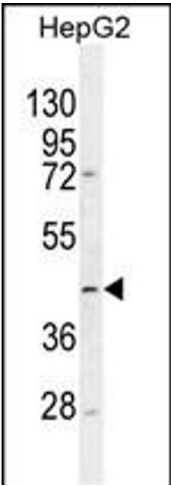
Background:	This gene encodes the protein trimethyllysine dioxygenase which is the first enzyme in the carnitine biosynthesis pathway. Carnitine play an essential role in the transport of activated fatty acids across the inner mitochondrial membrane. The encoded protein converts trimethyllysine into hydroxytrimethyllysine. A pseudogene of this gene is found on chromosome X. Alternate splicing results in multiple transcript variants.
Molecular Weight:	49518
Gene ID:	55217
NCBI Accession:	NP_001171726 , NP_060666
UniProt:	Q9NVH6

Application Details

Application Notes:	WB: 1:1000
Restrictions:	For Research Use only

Handling

Format:	Liquid
Buffer:	Purified polyclonal antibody supplied in PBS with 0.09 % (W/V) sodium azide.
Preservative:	Sodium azide
Precaution of Use:	This product contains Sodium azide: a POISONOUS AND HAZARDOUS SUBSTANCE which should be handled by trained staff only.
Storage:	4 °C,-20 °C
Storage Comment:	Maintain refrigerated at 2-8 °C for up to 6 months. For long term storage store at -20 °C in small aliquots to prevent freeze-thaw cycles.
Expiry Date:	6 months



Western Blotting

Image 1. TMLHE Antibody (N-term) (ABIN654701 and ABIN2844393) western blot analysis in HepG2 cell line lysates (35 µg/lane). This demonstrates the TMLHE antibody detected the TMLHE protein (arrow).