

Datasheet for ABIN654704
anti-KANSL3 antibody (AA 398-427)[Go to Product page](#)

2 Images

Overview

Quantity:	400 µL
Target:	KANSL3
Binding Specificity:	AA 398-427
Reactivity:	Human
Host:	Rabbit
Clonality:	Polyclonal
Conjugate:	This KANSL3 antibody is un-conjugated
Application:	Western Blotting (WB), Immunohistochemistry (Paraffin-embedded Sections) (IHC (p))

Product Details

Immunogen:	This KIAA1310 antibody is generated from rabbits immunized with a KLH conjugated synthetic peptide between 398-427 amino acids from the Central region of human KIAA1310.
Clone:	RB24189
Isotype:	Ig Fraction
Predicted Reactivity:	M
Purification:	This antibody is purified through a protein A column, followed by peptide affinity purification.

Target Details

Target:	KANSL3
Alternative Name:	KIAA1310 (KANSL3 Products)

Target Details

Molecular Weight:	95992
Gene ID:	55683
NCBI Accession:	NP_001108488
UniProt:	Q9P2N6

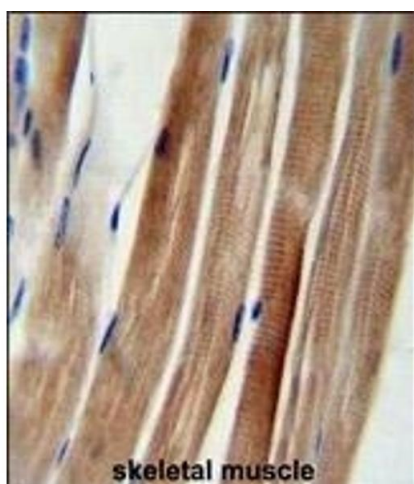
Application Details

Application Notes:	WB: 1:1000. IHC-P: 1:50~100
Restrictions:	For Research Use only

Handling

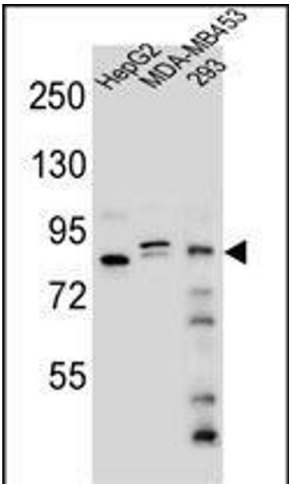
Format:	Liquid
Buffer:	Purified polyclonal antibody supplied in PBS with 0.09 % (W/V) sodium azide.
Preservative:	Sodium azide
Precaution of Use:	This product contains Sodium azide: a POISONOUS AND HAZARDOUS SUBSTANCE which should be handled by trained staff only.
Storage:	4 °C, -20 °C
Storage Comment:	Maintain refrigerated at 2-8 °C for up to 6 months. For long term storage store at -20 °C in small aliquots to prevent freeze-thaw cycles.
Expiry Date:	6 months

Images



Immunohistochemistry (Paraffin-embedded Sections)

Image 1. KI Antibody (Center) (ABIN654704 and ABIN2844396) immunohistochemistry analysis in formalin fixed and paraffin embedded human skeletal muscle followed by peroxidase conjugation of the secondary antibody and DAB staining. This data demonstrates the use of the KI Antibody (Center) for immunohistochemistry. Clinical relevance has not been evaluated.



Western Blotting

Image 2. KI Antibody (Center) (ABIN654704 and ABIN2844396) western blot analysis in HepG2,MDA-M,293 cell line lysates (35 µg/lane).This demonstrates the KI antibody detected the KI protein (arrow).