



[Go to Product page](#)

Datasheet for ABIN654712
anti-TLL1 antibody (C-Term)

2 Images

Overview

Quantity:	400 µL
Target:	TLL1
Binding Specificity:	AA 874-901, C-Term
Reactivity:	Human
Host:	Rabbit
Clonality:	Polyclonal
Conjugate:	This TLL1 antibody is un-conjugated
Application:	Western Blotting (WB), Immunohistochemistry (Paraffin-embedded Sections) (IHC (p))

Product Details

Immunogen:	This TLL1 antibody is generated from rabbits immunized with a KLH conjugated synthetic peptide between 874-901 amino acids from the C-terminal region of human TLL1.
Clone:	RB24678
Isotype:	Ig Fraction
Predicted Reactivity:	M
Purification:	This antibody is purified through a protein A column, followed by peptide affinity purification.

Target Details

Target:	TLL1
Alternative Name:	TLL1 (TLL1 Products)

Target Details

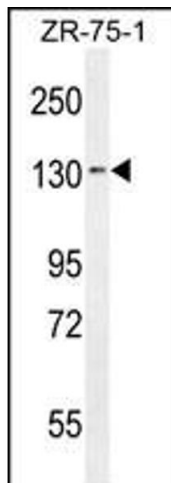
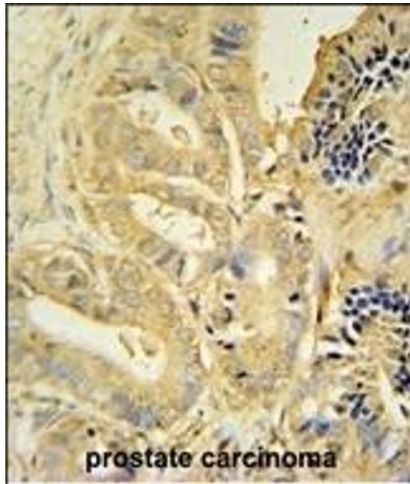
Background:	This gene encodes an astacin-like zinc-dependent metalloprotease and is a subfamily member of the metzincin family. A similar protein in mice is required during heart development and specifically processes procollagen C-propeptides and chordin at similar cleavage sites.
Molecular Weight:	114709
Gene ID:	7092
NCBI Accession:	NP_001191689 , NP_036596
UniProt:	O43897

Application Details

Application Notes:	WB: 1:1000. IHC-P: 1:50~100
Restrictions:	For Research Use only

Handling

Format:	Liquid
Buffer:	Purified polyclonal antibody supplied in PBS with 0.09 % (W/V) sodium azide.
Preservative:	Sodium azide
Precaution of Use:	This product contains Sodium azide: a POISONOUS AND HAZARDOUS SUBSTANCE which should be handled by trained staff only.
Storage:	4 °C, -20 °C
Storage Comment:	Maintain refrigerated at 2-8 °C for up to 6 months. For long term storage store at -20 °C in small aliquots to prevent freeze-thaw cycles.
Expiry Date:	6 months



Immunohistochemistry (Paraffin-embedded Sections)

Image 1. TLL1 antibody (C-term) (ABIN654712 and ABIN2844401) immunohistochemistry analysis in formalin fixed and paraffin embedded human prostate carcinoma followed by peroxidase conjugation of the secondary antibody and DAB staining. This data demonstrates the use of the TLL1 antibody (C-term) for immunohistochemistry. Clinical relevance has not been evaluated.

Western Blotting

Image 2. TLL1 Antibody (C-term) (ABIN654712 and ABIN2844401) western blot analysis in ZR-75-1 cell line lysates (35 µg/lane). This demonstrates the TLL1 antibody detected the TLL1 protein (arrow).