

Datasheet for ABIN654713  
**anti-PDHA2 antibody (AA 287-314)**[Go to Product page](#)

## 2 Images

## Overview

Quantity:	400 µL
Target:	PDHA2 (PDHa2)
Binding Specificity:	AA 287-314
Reactivity:	Human
Host:	Rabbit
Clonality:	Polyclonal
Conjugate:	This PDHA2 antibody is un-conjugated
Application:	Western Blotting (WB), Immunohistochemistry (Paraffin-embedded Sections) (IHC (p))

## Product Details

Immunogen:	This PDHA2 antibody is generated from rabbits immunized with a KLH conjugated synthetic peptide between 287-314 amino acids from the Central region of human PDHA2.
Clone:	RB24679
Isotype:	Ig Fraction
Purification:	This antibody is purified through a protein A column, followed by peptide affinity purification.

## Target Details

Target:	PDHA2 (PDHa2)
Alternative Name:	PDHA2 ( <a href="#">PDHa2 Products</a> )
Background:	The pyruvate dehydrogenase complex catalyzes the overall conversion of pyruvate to acetyl-

## Target Details

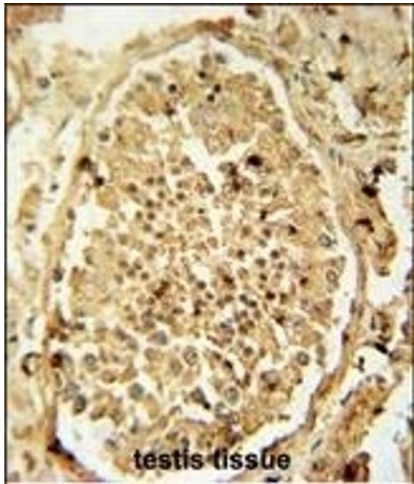
	CoA and CO(2). It contains multiple copies of three enzymatic components: pyruvate dehydrogenase (E1), dihydrolipoamide acetyltransferase (E2) and lipoamide dehydrogenase (E3).
Molecular Weight:	42933
Gene ID:	5161
NCBI Accession:	<a href="#">NP_005381</a>
UniProt:	<a href="#">P29803</a>
Pathways:	<a href="#">Warburg Effect</a>

## Application Details

Application Notes:	WB: 1:1000. IHC-P: 1:50~100
Restrictions:	For Research Use only

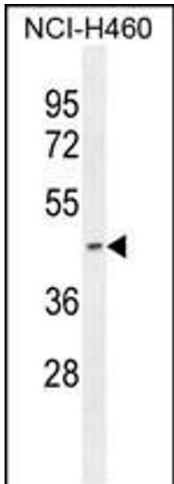
## Handling

Format:	Liquid
Buffer:	Purified polyclonal antibody supplied in PBS with 0.09 % (W/V) sodium azide.
Preservative:	Sodium azide
Precaution of Use:	This product contains Sodium azide: a POISONOUS AND HAZARDOUS SUBSTANCE which should be handled by trained staff only.
Storage:	4 °C,-20 °C
Storage Comment:	Maintain refrigerated at 2-8 °C for up to 6 months. For long term storage store at -20 °C in small aliquots to prevent freeze-thaw cycles.
Expiry Date:	6 months



Immunohistochemistry (Paraffin-embedded Sections)

**Image 1.** PDHA2 antibody (Center) (ABIN654713 and ABIN2844402) immunohistochemistry analysis in formalin fixed and paraffin embedded human testis tissue followed by peroxidase conjugation of the secondary antibody and DAB staining. This data demonstrates the use of the PDHA2 antibody (Center) for immunohistochemistry. Clinical relevance has not been evaluated.



Western Blotting

**Image 2.** PDHA2 Antibody (Center) (ABIN654713 and ABIN2844402) western blot analysis in NCI- cell line lysates (35 µg/lane). This demonstrates the PDHA2 antibody detected the PDHA2 protein (arrow).