

Datasheet for ABIN654715
anti-SPRR2A antibody (C-Term)[Go to Product page](#)

1 Image

Overview

Quantity:	400 µL
Target:	SPRR2A
Binding Specificity:	AA 48-72, C-Term
Reactivity:	Human
Host:	Rabbit
Clonality:	Polyclonal
Conjugate:	This SPRR2A antibody is un-conjugated
Application:	Western Blotting (WB)

Product Details

Immunogen:	This SPRR2A antibody is generated from rabbits immunized with a KLH conjugated synthetic peptide between 48-72 amino acids from the C-terminal region of human SPRR2A.
Clone:	RB24690
Isotype:	IgG
Purification:	This antibody is purified through a protein A column, followed by peptide affinity purification.

Target Details

Target:	SPRR2A
Alternative Name:	SPRR2A (SPRR2A Products)
Background:	Cross-linked envelope protein of keratinocytes. It is a keratinocyte protein that first appears in

Target Details

the cell cytosol, but ultimately becomes cross-linked to membrane proteins by transglutaminase. All that results in the formation of an insoluble envelope beneath the plasma membrane.

Molecular Weight: 7965

Gene ID: 6700

NCBI Accession: [NP_005979](#)

UniProt: [P35326](#)

Application Details

Application Notes: WB: 1:1000

Restrictions: For Research Use only

Handling

Format: Liquid

Buffer: Purified polyclonal antibody supplied in PBS with 0.09 % (W/V) sodium azide.

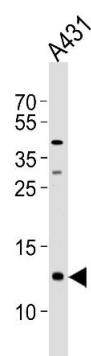
Preservative: Sodium azide

Precaution of Use: This product contains Sodium azide: a POISONOUS AND HAZARDOUS SUBSTANCE which should be handled by trained staff only.

Storage: 4 °C, -20 °C

Storage Comment: Maintain refrigerated at 2-8 °C for up to 6 months. For long term storage store at -20 °C in small aliquots to prevent freeze-thaw cycles.

Expiry Date: 6 months



Western Blotting

Image 1. Western blot analysis of lysate from A431 cell line, using SPRR2A Antibody (C-term) (ABIN654715 and ABIN2844404). (ABIN654715 and ABIN2844404) was diluted at 1:1000 at each lane. A goat anti-rabbit IgG H&L(HRP) at 1:5000 dilution was used as the secondary antibody. Lysate at 35 µg per lane.