



Datasheet for ABIN654718  
**anti-BUD13 antibody (C-Term)**



[Go to Product page](#)

4 Images

Overview

Quantity:	400 µL
Target:	BUD13
Binding Specificity:	AA 462-490, C-Term
Reactivity:	Human, Mouse
Host:	Rabbit
Clonality:	Polyclonal
Conjugate:	This BUD13 antibody is un-conjugated
Application:	Western Blotting (WB), Flow Cytometry (FACS), Immunohistochemistry (Paraffin-embedded Sections) (IHC (p))

Product Details

Immunogen:	This BUD13 antibody is generated from rabbits immunized with a KLH conjugated synthetic peptide between 462-490 amino acids from the C-terminal region of human BUD13.
Clone:	RB24909
Isotype:	Ig Fraction
Predicted Reactivity:	Rat
Purification:	This antibody is purified through a protein A column, followed by peptide affinity purification.

Target Details

Target:	BUD13
---------	-------

## Target Details

---

Alternative Name:	BUD13 ( <a href="#">BUD13 Products</a> )
Molecular Weight:	70521
Gene ID:	84811
NCBI Accession:	<a href="#">NP_001153208</a> , <a href="#">NP_116114</a>
UniProt:	<a href="#">Q9BRD0</a>

## Application Details

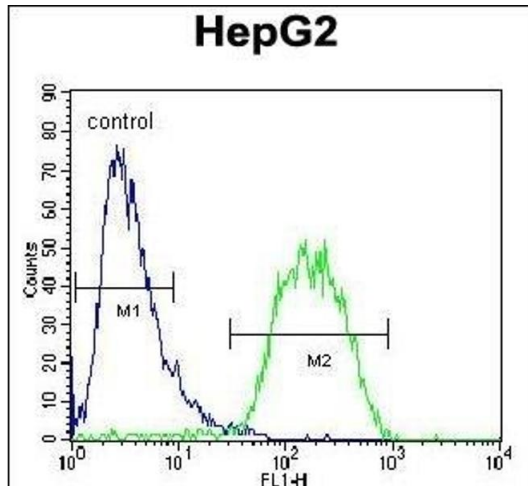
---

Application Notes:	WB: 1:1000. WB: 1:1000. IHC-P: 1:50~100. FC: 1:10~50
Restrictions:	For Research Use only

## Handling

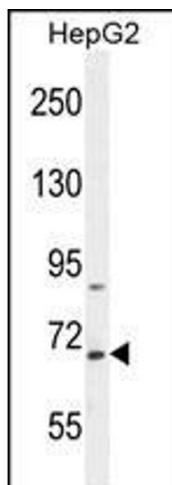
---

Format:	Liquid
Buffer:	Purified polyclonal antibody supplied in PBS with 0.09 % (W/V) sodium azide.
Preservative:	Sodium azide
Precaution of Use:	This product contains Sodium azide: a POISONOUS AND HAZARDOUS SUBSTANCE which should be handled by trained staff only.
Storage:	4 °C, -20 °C
Storage Comment:	Maintain refrigerated at 2-8 °C for up to 6 months. For long term storage store at -20 °C in small aliquots to prevent freeze-thaw cycles.
Expiry Date:	6 months



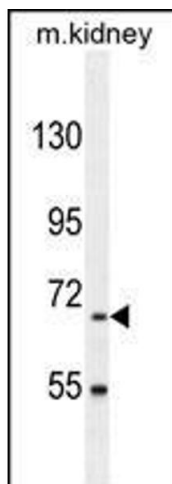
### Flow Cytometry

**Image 1.** BUD13 Antibody (C-term) (ABIN654718 and ABIN2844407) flow cytometric analysis of HepG2 cells (right histogram) compared to a negative control cell (left histogram). FITC-conjugated goat-anti-rabbit secondary antibodies were used for the analysis.



### Western Blotting

**Image 2.** BUD13 Antibody (C-term) (ABIN654718 and ABIN2844407) western blot analysis in HepG2 cell line lysates (35 µg/lane). This demonstrates the BUD13 antibody detected the BUD13 protein (arrow).



### Western Blotting

**Image 3.** BUD13 Antibody (C-term) (ABIN654718 and ABIN2844407) western blot analysis in mouse kidney tissue lysates (35 µg/lane). This demonstrates the BUD13 antibody detected the BUD13 protein (arrow).

Please check the [product details page](#) for more images. Overall 4 images are available for ABIN654718.