

Datasheet for ABIN654723
anti-CLPX antibody (C-Term)

3 Images

1 Publication

[Go to Product page](#)

Overview

Quantity:	400 µL
Target:	CLPX
Binding Specificity:	AA 449-477, C-Term
Reactivity:	Human
Host:	Rabbit
Clonality:	Polyclonal
Conjugate:	This CLPX antibody is un-conjugated
Application:	Western Blotting (WB), Flow Cytometry (FACS), Immunohistochemistry (Paraffin-embedded Sections) (IHC (p))

Product Details

Immunogen:	This CLPX antibody is generated from rabbits immunized with a KLH conjugated synthetic peptide between 449-477 amino acids from the C-terminal region of human CLPX.
Clone:	RB24942
Isotype:	Ig Fraction
Predicted Reactivity:	M, Rat
Purification:	This antibody is purified through a protein A column, followed by peptide affinity purification.

Target Details

Target:	CLPX
---------	------

Target Details

Alternative Name:	CLPX (CLPX Products)
Background:	ATP-dependent specificity component of the Clp protease. It directs the protease to specific substrates. Can perform chaperone functions in the absence of clpP (By similarity).
Molecular Weight:	69224
Gene ID:	10845
NCBI Accession:	NP_006651
UniProt:	O76031

Application Details

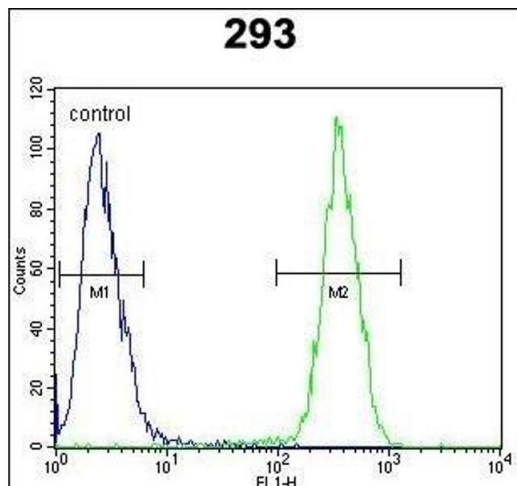
Application Notes:	WB: 1:1000. IHC-P: 1:50~100. FC: 1:10~50
Restrictions:	For Research Use only

Handling

Format:	Liquid
Buffer:	Purified polyclonal antibody supplied in PBS with 0.09 % (W/V) sodium azide.
Preservative:	Sodium azide
Precaution of Use:	This product contains Sodium azide: a POISONOUS AND HAZARDOUS SUBSTANCE which should be handled by trained staff only.
Storage:	4 °C, -20 °C
Storage Comment:	Maintain refrigerated at 2-8 °C for up to 6 months. For long term storage store at -20 °C in small aliquots to prevent freeze-thaw cycles.
Expiry Date:	6 months

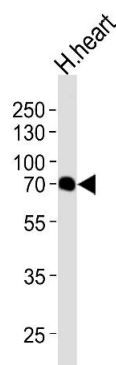
Publications

Product cited in:	Gispert, Parganlija, Klinkenberg, Dröse, Wittig, Mittelbronn, Grzmil, Koob, Hamann, Walter, Büchel, Adler, Hrabé de Angelis, Busch, Zell, Reichert, Brandt, Osiewacz, Jendrach, Auburger: " Loss of mitochondrial peptidase Clpp leads to infertility, hearing loss plus growth retardation via accumulation of CLPX, mtDNA and inflammatory factors." in: Human molecular genetics , Vol. 22, Issue 24, pp. 4871-87, (2013) (PubMed).
-------------------	-----------------------------------------------------------------------------------------------------------------------------------------------------------------------------------------------------------------------------------------------------------------------------------------------------------------------------------------------------------------------------------------------------------------------------------------------------------------



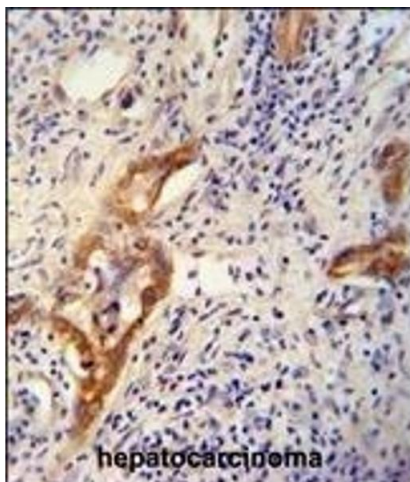
Flow Cytometry

Image 1. CLPX Antibody (C-term) (ABIN654723 and ABIN2844412) flow cytometric analysis of 293 cells (right histogram) compared to a negative control cell (left histogram). FITC-conjugated goat-anti-rabbit secondary antibodies were used for the analysis.



Western Blotting

Image 2. Western blot analysis of lysate from human heart tissue lysate, using CLPX Antibody (C-term) (ABIN654723 and ABIN2844412). (ABIN654723 and ABIN2844412) was diluted at 1:1000 at each lane. A goat anti-rabbit IgG H&L(HRP) at 1:5000 dilution was used as the secondary antibody. Lysate at 35 µg per lane.



Immunohistochemistry (Paraffin-embedded Sections)

Image 3. CLPX antibody (C-term) (ABIN654723 and ABIN2844412) immunohistochemistry analysis in formalin fixed and paraffin embedded human hepatocarcinoma followed by peroxidase conjugation of the secondary antibody and DAB staining. This data demonstrates the use of the CLPX antibody (C-term) for immunohistochemistry. Clinical relevance has not been evaluated.