



Datasheet for ABIN654729
anti-RTN4IP1 antibody (C-Term)



[Go to Product page](#)

3 Images

Overview

Quantity:	400 µL
Target:	RTN4IP1
Binding Specificity:	AA 335-363, C-Term
Reactivity:	Human
Host:	Rabbit
Clonality:	Polyclonal
Conjugate:	This RTN4IP1 antibody is un-conjugated
Application:	Western Blotting (WB), Flow Cytometry (FACS), Immunohistochemistry (Paraffin-embedded Sections) (IHC (p))

Product Details

Immunogen:	This RT4I1 antibody is generated from rabbits immunized with a KLH conjugated synthetic peptide between 335-363 amino acids from the C-terminal region of human RT4I1.
Clone:	RB28658
Isotype:	Ig Fraction
Purification:	This antibody is purified through a protein A column, followed by peptide affinity purification.

Target Details

Target:	RTN4IP1
Alternative Name:	RT4I1 (RTN4IP1 Products)

Target Details

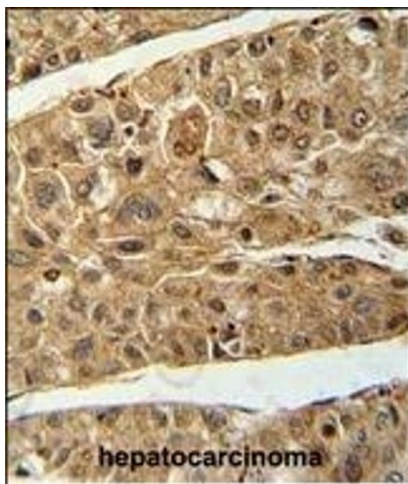
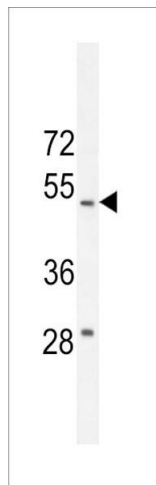
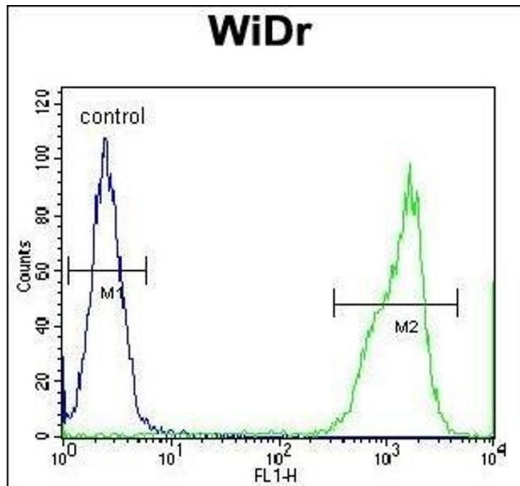
Background:	This gene encodes a novel mitochondrial protein that interacts with reticulon 4, which is a potent inhibitor of regeneration following spinal cord injury. The interaction of reticulon 4 with mitochondrial proteins may provide insight into the mechanisms for reticulon-induced inhibition of neurite growth.
Molecular Weight:	43590
Gene ID:	84816
NCBI Accession:	NP_116119
UniProt:	Q8WWV3

Application Details

Application Notes:	WB: 1:1000. IHC-P: 1:50~100. FC: 1:10~50
Restrictions:	For Research Use only

Handling

Format:	Liquid
Buffer:	Purified polyclonal antibody supplied in PBS with 0.09 % (W/V) sodium azide.
Preservative:	Sodium azide
Precaution of Use:	This product contains Sodium azide: a POISONOUS AND HAZARDOUS SUBSTANCE which should be handled by trained staff only.
Storage:	4 °C,-20 °C
Storage Comment:	Maintain refrigerated at 2-8 °C for up to 6 months. For long term storage store at -20 °C in small aliquots to prevent freeze-thaw cycles.
Expiry Date:	6 months



Flow Cytometry

Image 1. RT4I1 Antibody (C-term) (ABIN654729 and ABIN2844417) flow cytometric analysis of WiDr cells (right histogram) compared to a negative control cell (left histogram). FITC-conjugated goat-anti-rabbit secondary antibodies were used for the analysis.

Western Blotting

Image 2. RT4I1 Antibody (C-term) (ABIN654729 and ABIN2844417) western blot analysis in WiDr cell line lysates (35 µg/lane). This demonstrates the RT4I1 antibody detected the RT4I1 protein (arrow).

Immunohistochemistry (Paraffin-embedded Sections)

Image 3. RT4I1 Antibody (C-term) (ABIN654729 and ABIN2844417) immunohistochemistry analysis in formalin fixed and paraffin embedded human hepatocarcinoma followed by peroxidase conjugation of the secondary antibody and DAB staining. This data demonstrates the use of the RT4I1 Antibody (C-term) for immunohistochemistry. Clinical relevance has not been evaluated.