

Datasheet for ABIN654738
anti-WDPCP antibody (C-Term)[Go to Product page](#)

2 Images

Overview

Quantity:	400 µL
Target:	WDPCP
Binding Specificity:	AA 676-705, C-Term
Reactivity:	Human
Host:	Rabbit
Clonality:	Polyclonal
Conjugate:	This WDPCP antibody is un-conjugated
Application:	Western Blotting (WB), Immunohistochemistry (Paraffin-embedded Sections) (IHC (p))

Product Details

Immunogen:	This CB086 antibody is generated from rabbits immunized with a KLH conjugated synthetic peptide between 676-705 amino acids from the C-terminal region of human CB086.
Clone:	RB28626
Isotype:	Ig Fraction
Purification:	This antibody is purified through a protein A column, followed by peptide affinity purification.

Target Details

Target:	WDPCP
Alternative Name:	CB086 (WDPCP Products)
Background:	The C20RF86 gene encodes an ortholog of Drosophila 'fritz,' a cytoplasmic WD40 repeat

Target Details

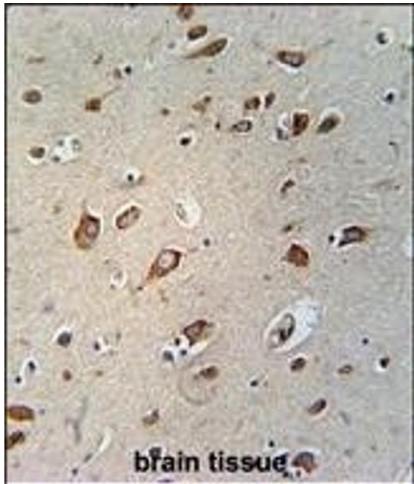
	protein that controls planar cell polarity (summarized by Kim et al., 2010 [PubMed 20671153]).
Molecular Weight:	85084
Gene ID:	51057
NCBI Accession:	NP_056994
UniProt:	O95876

Application Details

Application Notes:	WB: 1:1000. IHC-P: 1:50~100
Restrictions:	For Research Use only

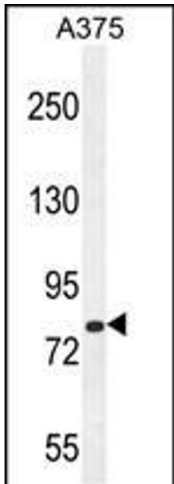
Handling

Format:	Liquid
Buffer:	Purified polyclonal antibody supplied in PBS with 0.09 % (W/V) sodium azide.
Preservative:	Sodium azide
Precaution of Use:	This product contains Sodium azide: a POISONOUS AND HAZARDOUS SUBSTANCE which should be handled by trained staff only.
Storage:	4 °C,-20 °C
Storage Comment:	Maintain refrigerated at 2-8 °C for up to 6 months. For long term storage store at -20 °C in small aliquots to prevent freeze-thaw cycles.
Expiry Date:	6 months



Immunohistochemistry (Paraffin-embedded Sections)

Image 1. C Antibody (C-term) (ABIN654738 and ABIN2844425) immunohistochemistry analysis in formalin fixed and paraffin embedded human brain tissue followed by peroxidase conjugation of the secondary antibody and DAB staining. This data demonstrates the use of the C Antibody (C-term) for immunohistochemistry. Clinical relevance has not been evaluated.



Western Blotting

Image 2. C Antibody (C-term) (ABIN654738 and ABIN2844425) western blot analysis in cell line lysates (35 μ g/lane). This demonstrates the C antibody detected the C protein (arrow).