

Datasheet for ABIN654741

anti-CCDC9 antibody (N-Term)

3 Images

[Go to Product page](#)

Overview

Quantity:	400 µL
Target:	CCDC9
Binding Specificity:	AA 19-48, N-Term
Reactivity:	Human, Mouse
Host:	Rabbit
Clonality:	Polyclonal
Conjugate:	This CCDC9 antibody is un-conjugated
Application:	Western Blotting (WB), Flow Cytometry (FACS)

Product Details

Immunogen:	This CCDC9 antibody is generated from rabbits immunized with a KLH conjugated synthetic peptide between 19-48 amino acids from the N-terminal region of human CCDC9.
Clone:	RB28635
Isotype:	Ig Fraction
Purification:	This antibody is purified through a protein A column, followed by peptide affinity purification.

Target Details

Target:	CCDC9
Alternative Name:	CCDC9 (CCDC9 Products)
Molecular Weight:	59703

Target Details

Gene ID: 26093

NCBI Accession: [NP_056418](#)

UniProt: [Q9Y3X0](#)

Application Details

Application Notes: WB: 1:1000. WB: 1:1000. FC: 1:10~50

Restrictions: For Research Use only

Handling

Format: Liquid

Buffer: Purified polyclonal antibody supplied in PBS with 0.09 % (W/V) sodium azide.

Preservative: Sodium azide

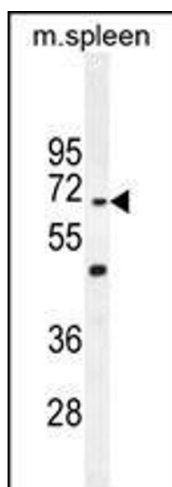
Precaution of Use: This product contains Sodium azide: a POISONOUS AND HAZARDOUS SUBSTANCE which should be handled by trained staff only.

Storage: 4 °C, -20 °C

Storage Comment: Maintain refrigerated at 2-8 °C for up to 6 months. For long term storage store at -20 °C in small aliquots to prevent freeze-thaw cycles.

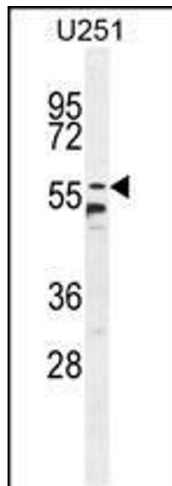
Expiry Date: 6 months

Images



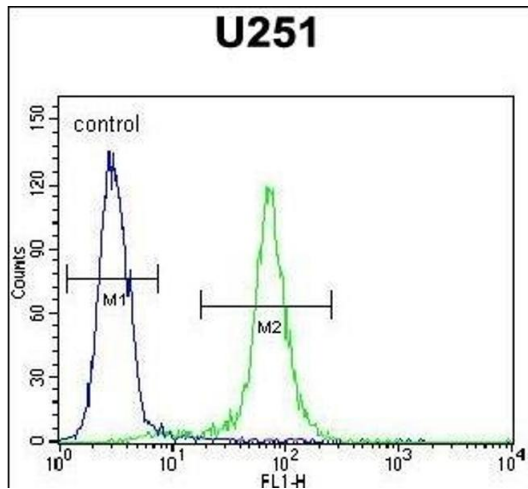
Western Blotting

Image 1. CCDC9 Antibody (N-term) (ABIN654741 and ABIN2844427) western blot analysis in mouse spleen tissue lysates (35 µg/lane). This demonstrates the CCDC9 antibody detected the CCDC9 protein (arrow).



Western Blotting

Image 2. CCDC9 Antibody (N-term) (ABIN654741 and ABIN2844427) western blot analysis in cell line lysates (35 μ g/lane). This demonstrates the CCDC9 antibody detected the CCDC9 protein (arrow).



Flow Cytometry

Image 3. CCDC9 Antibody (N-term) (ABIN654741 and ABIN2844427) flow cytometric analysis of cells (right histogram) compared to a negative control cell (left histogram). FITC-conjugated goat-anti-rabbit secondary antibodies were used for the analysis.