



[Go to Product page](#)

Datasheet for ABIN654743

anti-CWC22 antibody (N-Term)

3 Images

Overview

Quantity:	400 µL
Target:	CWC22
Binding Specificity:	AA 16-45, N-Term
Reactivity:	Human
Host:	Rabbit
Clonality:	Polyclonal
Conjugate:	This CWC22 antibody is un-conjugated
Application:	Western Blotting (WB), Flow Cytometry (FACS), Immunohistochemistry (Paraffin-embedded Sections) (IHC (p))

Product Details

Immunogen:	This CWC22 antibody is generated from rabbits immunized with a KLH conjugated synthetic peptide between 16-45 amino acids from the N-terminal region of human CWC22.
Clone:	RB28638
Isotype:	Ig Fraction
Purification:	This antibody is purified through a protein A column, followed by peptide affinity purification.

Target Details

Target:	CWC22
Alternative Name:	CWC22 (CWC22 Products)

Target Details

Background: May be involved in pre-mRNA splicing.

Molecular Weight: 105466

Gene ID: 57703

NCBI Accession: [NP_065994](#)

UniProt: [Q9HCG8](#)

Application Details

Application Notes: WB: 1:1000. IHC-P: 1:50~100. FC: 1:10~50

Restrictions: For Research Use only

Handling

Format: Liquid

Buffer: Purified polyclonal antibody supplied in PBS with 0.09 % (W/V) sodium azide.

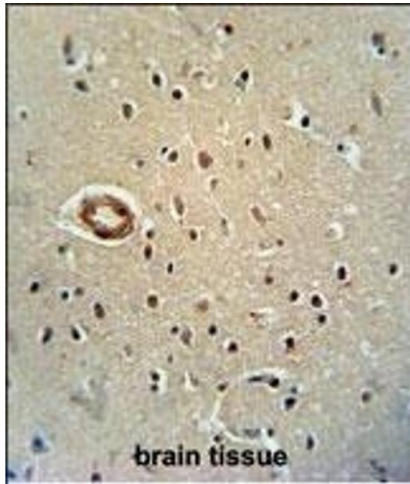
Preservative: Sodium azide

Precaution of Use: This product contains Sodium azide: a POISONOUS AND HAZARDOUS SUBSTANCE which should be handled by trained staff only.

Storage: 4 °C,-20 °C

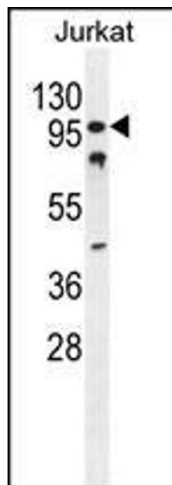
Storage Comment: Maintain refrigerated at 2-8 °C for up to 6 months. For long term storage store at -20 °C in small aliquots to prevent freeze-thaw cycles.

Expiry Date: 6 months



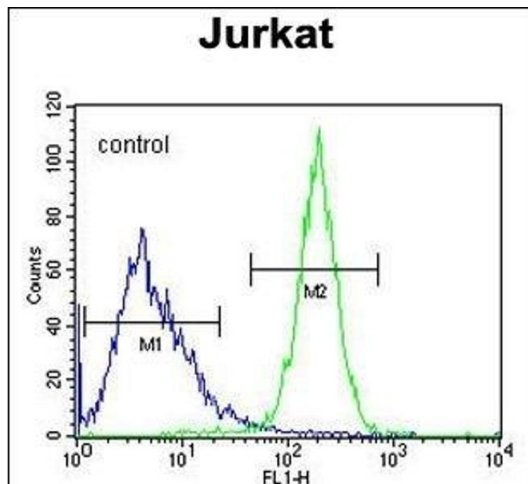
Immunohistochemistry (Paraffin-embedded Sections)

Image 1. CWC22 antibody (N-term) (ABIN654743 and ABIN2844428) immunohistochemistry analysis in formalin fixed and paraffin embedded human brain tissue followed by peroxidase conjugation of the secondary antibody and DAB staining. This data demonstrates the use of the CWC22 antibody (N-term) for immunohistochemistry. Clinical relevance has not been evaluated.



Western Blotting

Image 2. CWC22 Antibody (N-term) (ABIN654743 and ABIN2844428) western blot analysis in Jurkat cell line lysates (35 µg/lane). This demonstrates the CWC22 antibody detected the CWC22 protein (arrow).



Flow Cytometry

Image 3. CWC22 Antibody (N-term) (ABIN654743 and ABIN2844428) flow cytometric analysis of Jurkat cells (right histogram) compared to a negative control cell (left histogram). FITC-conjugated goat-anti-rabbit secondary antibodies were used for the analysis.