

Datasheet for ABIN654744
anti-DPEP3 antibody (C-Term)[Go to Product page](#)

1 Image

Overview

Quantity:	400 µL
Target:	DPEP3
Binding Specificity:	AA 391-420, C-Term
Reactivity:	Human
Host:	Rabbit
Clonality:	Polyclonal
Conjugate:	This DPEP3 antibody is un-conjugated
Application:	Western Blotting (WB)

Product Details

Immunogen:	This DPEP3 antibody is generated from rabbits immunized with a KLH conjugated synthetic peptide between 391-420 amino acids from the C-terminal region of human DPEP3.
Clone:	RB28639
Isotype:	Ig Fraction
Purification:	This antibody is purified through a protein A column, followed by peptide affinity purification.

Target Details

Target:	DPEP3
Alternative Name:	DPEP3 (DPEP3 Products)
Background:	This gene encodes a membrane-bound glycoprotein from the family of dipeptidases involved in

Target Details

hydrolytic metabolism of various dipeptides, including penem and carbapenem beta-lactam antibiotics. This gene is located on chromosome 16 in a cluster with another member of this family. Alternatively spliced transcript variants that encode different isoforms have been found for this gene.

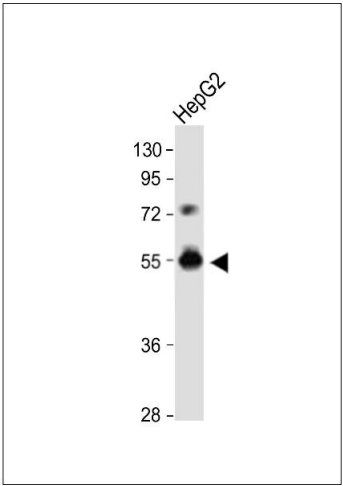
Molecular Weight:	53687
Gene ID:	64180
NCBI Accession:	NP_001123230 , NP_071752
UniProt:	Q9H4B8

Application Details

Application Notes:	WB: 1:1000
Restrictions:	For Research Use only

Handling

Format:	Liquid
Buffer:	Purified polyclonal antibody supplied in PBS with 0.09 % (W/V) sodium azide.
Preservative:	Sodium azide
Precaution of Use:	This product contains Sodium azide: a POISONOUS AND HAZARDOUS SUBSTANCE which should be handled by trained staff only.
Storage:	4 °C,-20 °C
Storage Comment:	Maintain refrigerated at 2-8 °C for up to 6 months. For long term storage store at -20 °C in small aliquots to prevent freeze-thaw cycles.
Expiry Date:	6 months



Western Blotting

Image 1. DPEP3 Antibody (C-term) (ABIN654744 and ABIN2844429) western blot analysis in HepG2 cell line lysates (35 µg/lane). This demonstrates the DPEP3 antibody detected the DPEP3 protein (arrow).