

Datasheet for ABIN654749  
**anti-LIX1 antibody (C-Term)**[Go to Product page](#)

## 1 Image

## Overview

|                      |                                     |
|----------------------|-------------------------------------|
| Quantity:            | 400 µL                              |
| Target:              | LIX1                                |
| Binding Specificity: | AA 221-250, C-Term                  |
| Reactivity:          | Human, Mouse                        |
| Host:                | Rabbit                              |
| Clonality:           | Polyclonal                          |
| Conjugate:           | This LIX1 antibody is un-conjugated |
| Application:         | Western Blotting (WB)               |

## Product Details

|               |  |
|---------------|--|
| Immunogen:    | This LIX1 antibody is generated from rabbits immunized with a KLH conjugated synthetic peptide between 221-250 amino acids from the C-terminal region of human LIX1. |
| Clone:        | RB28661  |
| Isotype:      | Ig Fraction  |
| Purification: | This antibody is purified through a protein A column, followed by peptide affinity purification.   |

## Target Details

|                   |  |
|-------------------|--|
| Target:           | LIX1   |
| Alternative Name: | LIX1 ( <a href="#">LIX1 Products</a> )                 |
| Background:       | The specific function of this protein remains unknown. |

## Target Details

|                   |                           |
|-------------------|---------------------------|
| Molecular Weight: | 31891                     |
| Gene ID:          | 167410                    |
| NCBI Accession:   | <a href="#">NP_694966</a> |
| UniProt:          | <a href="#">Q8N485</a>    |

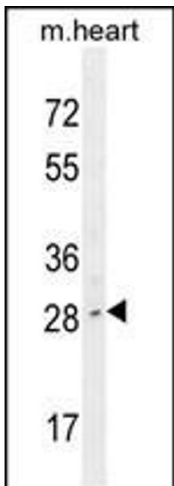
## Application Details

|                    |                       |
|--------------------|-----------------------|
| Application Notes: | WB: 1:1000            |
| Restrictions:      | For Research Use only |

## Handling

|                    |  |
|--------------------|--|
| Format:            | Liquid   |
| Buffer:            | Purified polyclonal antibody supplied in PBS with 0.09 % (W/V) sodium azide.   |
| Preservative:      | Sodium azide   |
| Precaution of Use: | This product contains Sodium azide: a POISONOUS AND HAZARDOUS SUBSTANCE which should be handled by trained staff only.                     |
| Storage:           | 4 °C,-20 °C  |
| Storage Comment:   | Maintain refrigerated at 2-8 °C for up to 6 months. For long term storage store at -20 °C in small aliquots to prevent freeze-thaw cycles. |
| Expiry Date:       | 6 months   |

## Images



### Western Blotting

**Image 1.** LIX1 Antibody (C-term) (ABIN654749 and ABIN2844431) western blot analysis in mouse heart tissue lysates (35 µg/lane). This demonstrates the LIX1 antibody detected the LIX1 protein (arrow).