



[Go to Product page](#)

Datasheet for ABIN654754  
**anti-SLC35E2 antibody (N-Term)**

3 Images

### Overview

Quantity:	400 µL
Target:	SLC35E2
Binding Specificity:	AA 1-30, N-Term
Reactivity:	Human
Host:	Rabbit
Clonality:	Polyclonal
Conjugate:	This SLC35E2 antibody is un-conjugated
Application:	Western Blotting (WB), Flow Cytometry (FACS), Immunohistochemistry (Paraffin-embedded Sections) (IHC (p))

### Product Details

Immunogen:	This S35E2 antibody is generated from rabbits immunized with a KLH conjugated synthetic peptide between 1-30 amino acids from the N-terminal region of human S35E2.
Clone:	RB28675
Isotype:	Ig Fraction
Purification:	This antibody is purified through a protein A column, followed by peptide affinity purification.

### Target Details

Target:	SLC35E2
Alternative Name:	S35E2 ( <a href="#">SLC35E2 Products</a> )

## Target Details

---

Background: Putative transporter (By similarity).

Molecular Weight: 43777

Gene ID: 9906, 728661

NCBI Accession: [NP\\_001104251](#)

UniProt: [P0CK96](#)

## Application Details

---

Application Notes: WB: 1:1000. IHC-P: 1:50~100. FC: 1:10~50

Restrictions: For Research Use only

## Handling

---

Format: Liquid

Buffer: Purified polyclonal antibody supplied in PBS with 0.09 % (W/V) sodium azide.

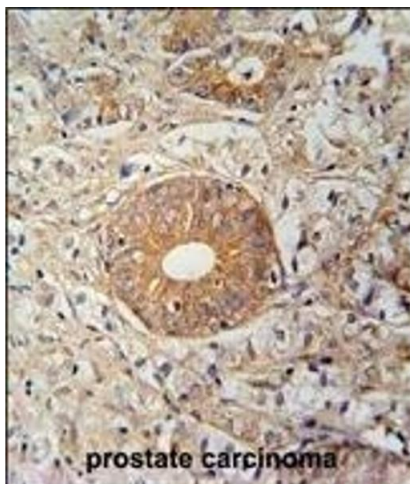
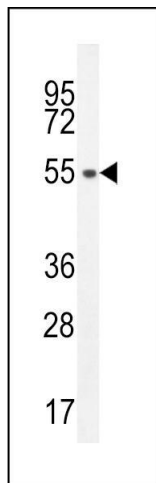
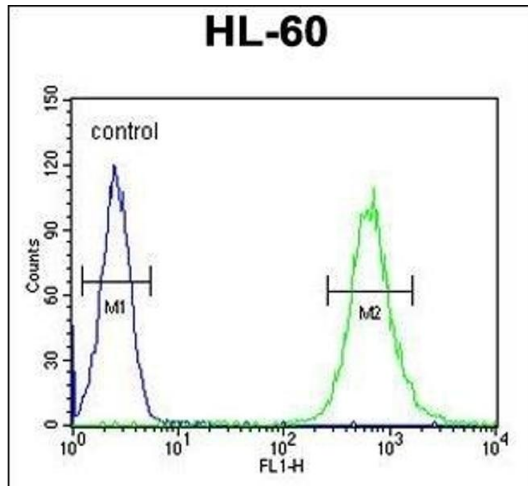
Preservative: Sodium azide

Precaution of Use: This product contains Sodium azide: a POISONOUS AND HAZARDOUS SUBSTANCE which should be handled by trained staff only.

Storage: 4 °C, -20 °C

Storage Comment: Maintain refrigerated at 2-8 °C for up to 6 months. For long term storage store at -20 °C in small aliquots to prevent freeze-thaw cycles.

Expiry Date: 6 months



### Flow Cytometry

**Image 1.** S35E2 Antibody (N-term) (ABIN654754 and ABIN2844438) flow cytometric analysis of HL-60 cells (right histogram) compared to a negative control cell (left histogram). FITC-conjugated goat-anti-rabbit secondary antibodies were used for the analysis.

### Western Blotting

**Image 2.** S35E2 Antibody (N-term) (ABIN654754 and ABIN2844438) western blot analysis in HL-60 cell line lysates (35 µg/lane). This demonstrates the S35E2 antibody detected the S35E2 protein (arrow).

### Immunohistochemistry (Paraffin-embedded Sections)

**Image 3.** S35E2 Antibody (N-term) (ABIN654754 and ABIN2844438) immunohistochemistry analysis in formalin fixed and paraffin embedded human prostate carcinoma followed by peroxidase conjugation of the secondary antibody and DAB staining. This data demonstrates the use of the S35E2 Antibody (N-term) for immunohistochemistry. Clinical relevance has not been evaluated.