

Datasheet for ABIN654756
anti-SP8 antibody (C-Term)[Go to Product page](#)

1 Image

Overview

Quantity:	400 µL
Target:	SP8
Binding Specificity:	AA 386-415, C-Term
Reactivity:	Human, Mouse
Host:	Rabbit
Clonality:	Polyclonal
Conjugate:	This SP8 antibody is un-conjugated
Application:	Western Blotting (WB)

Product Details

Immunogen:	This SP8 antibody is generated from rabbits immunized with a KLH conjugated synthetic peptide between 386-415 amino acids from the C-terminal region of human SP8.
Clone:	RB28678
Isotype:	Ig Fraction
Predicted Reactivity:	C, Zf, X
Purification:	This antibody is purified through a protein A column, followed by peptide affinity purification.

Target Details

Target:	SP8
Alternative Name:	SP8 (SP8 Products)

Target Details

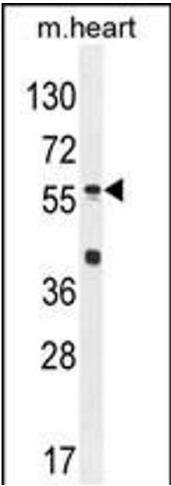
Background:	Transcription factor which plays a key role in limb development. Positively regulates FGF8 expression in the apical ectodermal ridge (AER) and contributes to limb outgrowth in embryos (By similarity).
Molecular Weight:	48674
Gene ID:	221833
NCBI Accession:	NP_874359 , NP_945194
UniProt:	Q8IXZ3

Application Details

Application Notes:	WB: 1:1000
Restrictions:	For Research Use only

Handling

Format:	Liquid
Buffer:	Purified polyclonal antibody supplied in PBS with 0.09 % (W/V) sodium azide.
Preservative:	Sodium azide
Precaution of Use:	This product contains Sodium azide: a POISONOUS AND HAZARDOUS SUBSTANCE which should be handled by trained staff only.
Storage:	4 °C, -20 °C
Storage Comment:	Maintain refrigerated at 2-8 °C for up to 6 months. For long term storage store at -20 °C in small aliquots to prevent freeze-thaw cycles.
Expiry Date:	6 months



Western Blotting

Image 1. SP8 Antibody (C-term) (ABIN654756 and ABIN2844440) western blot analysis in mouse heart tissue lysates (35 µg/lane). This demonstrates the SP8 antibody detected the SP8 protein (arrow).