

Datasheet for ABIN654757

**anti-Syncoilin antibody (N-Term)****3** Images[Go to Product page](#)

## Overview

Quantity:	400 µL
Target:	Syncoilin (Sync)
Binding Specificity:	AA 129-158, N-Term
Reactivity:	Human
Host:	Rabbit
Clonality:	Polyclonal
Conjugate:	This Syncoilin antibody is un-conjugated
Application:	Western Blotting (WB), Flow Cytometry (FACS), Immunohistochemistry (Paraffin-embedded Sections) (IHC (p))

## Product Details

Immunogen:	This SYNCI antibody is generated from rabbits immunized with a KLH conjugated synthetic peptide between 129-158 amino acids from the N-terminal region of human SYNCI.
Clone:	RB28681
Isotype:	Ig Fraction
Purification:	This antibody is purified through a protein A column, followed by peptide affinity purification.

## Target Details

Target:	Syncoilin (Sync)
Alternative Name:	SYNCI ( <a href="#">Sync Products</a> )

## Target Details

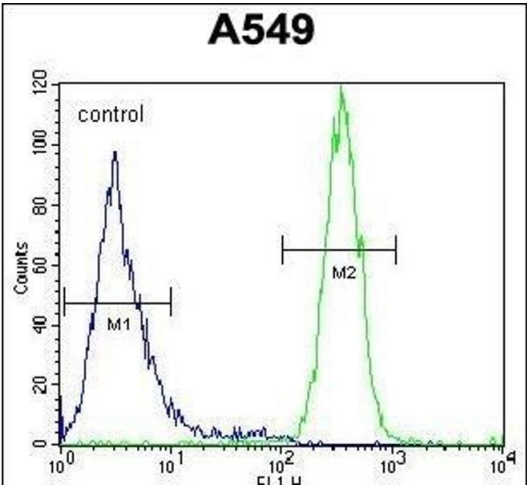
Background:	This gene encodes a member of the intermediate filament family which contains an N-terminal head domain, followed by a central coiled-coil region and a short C-terminal tail. The protein is highly expressed in skeletal and cardiac muscle. The protein links the dystrophin associated protein complex (DAPC) to desmin filaments in muscle and may have a structural role in striated muscle. Multiple transcript variants encoding different isoforms have been found for this gene.
Molecular Weight:	55299
Gene ID:	81493
NCBI Accession:	<a href="#">NP_001155180</a> , <a href="#">NP_110413</a>
UniProt:	<a href="#">Q9H7C4</a>

## Application Details

Application Notes:	WB: 1:1000. IHC-P: 1:50~100. FC: 1:10~50
Restrictions:	For Research Use only

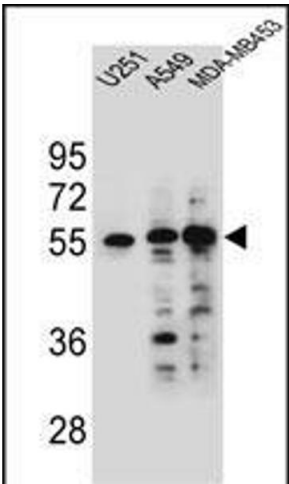
## Handling

Format:	Liquid
Buffer:	Purified polyclonal antibody supplied in PBS with 0.09 % (W/V) sodium azide.
Preservative:	Sodium azide
Precaution of Use:	This product contains Sodium azide: a POISONOUS AND HAZARDOUS SUBSTANCE which should be handled by trained staff only.
Storage:	4 °C, -20 °C
Storage Comment:	Maintain refrigerated at 2-8 °C for up to 6 months. For long term storage store at -20 °C in small aliquots to prevent freeze-thaw cycles.
Expiry Date:	6 months



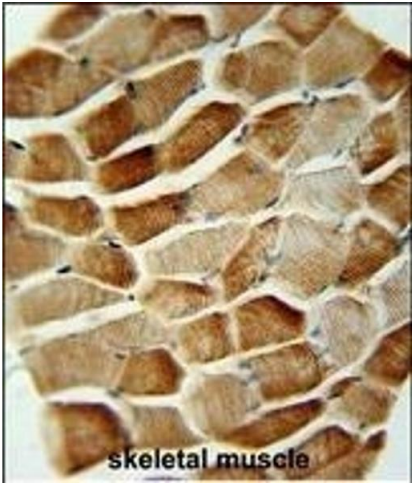
### Flow Cytometry

**Image 1.** SYNCI Antibody (N-term) (ABIN654757 and ABIN2844441) flow cytometric analysis of A549 cells (right histogram) compared to a negative control cell (left histogram). FITC-conjugated goat-anti-rabbit secondary antibodies were used for the analysis.



### Western Blotting

**Image 2.** SYNCI Antibody (N-term) (ABIN654757 and ABIN2844441) western blot analysis in A549 and MDA-MB453 cell line lysates (35 µg/lane). This demonstrates the SYNCI antibody detected the SYNCI protein (arrow).



### Immunohistochemistry (Paraffin-embedded Sections)

**Image 3.** SYNCI Antibody (N-term) (ABIN654757 and ABIN2844441) immunohistochemistry analysis in formalin fixed and paraffin embedded human skeletal muscle followed by peroxidase conjugation of the secondary antibody and DAB staining. This data demonstrates the use of the SYNCI Antibody (N-term) for immunohistochemistry. Clinical relevance has not been evaluated.