

Datasheet for ABIN654769
anti-ORMDL2 antibody (AA 53-81)[Go to Product page](#)

2 Images

Overview

Quantity:	400 µL
Target:	ORMDL2
Binding Specificity:	AA 53-81
Reactivity:	Human
Host:	Rabbit
Clonality:	Polyclonal
Conjugate:	This ORMDL2 antibody is un-conjugated
Application:	Western Blotting (WB), Immunohistochemistry (Paraffin-embedded Sections) (IHC (p))

Product Details

Immunogen:	This ORML2 antibody is generated from rabbits immunized with a KLH conjugated synthetic peptide between 53-81 amino acids from the Central region of human ORML2.
Clone:	RB28704
Isotype:	Ig Fraction
Predicted Reactivity:	B, Zf, X, M, Rat
Purification:	This antibody is purified through a protein A column, followed by peptide affinity purification.

Target Details

Target:	ORMDL2
Alternative Name:	ORML2 (ORMDL2 Products)

Target Details

Background:	Negative regulator of sphingolipid synthesis.
Molecular Weight:	17363
Gene ID:	29095
NCBI Accession:	NP_054901
UniProt:	Q53FV1

Application Details

Application Notes:	WB: 1:1000. IHC-P: 1:50~100
Restrictions:	For Research Use only

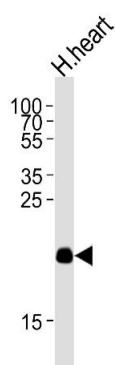
Handling

Format:	Liquid
Buffer:	Purified polyclonal antibody supplied in PBS with 0.09 % (W/V) sodium azide.
Preservative:	Sodium azide
Precaution of Use:	This product contains Sodium azide: a POISONOUS AND HAZARDOUS SUBSTANCE which should be handled by trained staff only.
Storage:	4 °C,-20 °C
Storage Comment:	Maintain refrigerated at 2-8 °C for up to 6 months. For long term storage store at -20 °C in small aliquots to prevent freeze-thaw cycles.
Expiry Date:	6 months



Immunohistochemistry (Paraffin-embedded Sections)

Image 1. ORML2 Antibody (Center) (ABIN654769 and ABIN2844449) immunohistochemistry analysis in formalin fixed and paraffin embedded human skeletal muscle followed by peroxidase conjugation of the secondary antibody and DAB staining. This data demonstrates the use of the ORML2 Antibody (Center) for immunohistochemistry. Clinical relevance has not been evaluated.



Western Blotting

Image 2. Western blot analysis of lysate from human heart tissue lysate, using ORML2 Antibody (Center) (ABIN654769 and ABIN2844449). (ABIN654769 and ABIN2844449) was diluted at 1:1000 at each lane. A goat anti-rabbit IgG H&L(HRP) at 1:5000 dilution was used as the secondary antibody. Lysate at 35 µg per lane.