

Datasheet for ABIN654770  
**anti-MS4A4A antibody (N-Term)**

## 2 Images

[Go to Product page](#)

## Overview

Quantity:	400 µL
Target:	MS4A4A
Binding Specificity:	AA 37-64, N-Term
Reactivity:	Human
Host:	Rabbit
Clonality:	Polyclonal
Conjugate:	This MS4A4A antibody is un-conjugated
Application:	Western Blotting (WB), Flow Cytometry (FACS)

## Product Details

Immunogen:	This M4A4A antibody is generated from rabbits immunized with a KLH conjugated synthetic peptide between 37-64 amino acids from the N-terminal region of human M4A4A.
Clone:	RB28710
Isotype:	Ig Fraction
Purification:	This antibody is purified through a protein A column, followed by peptide affinity purification.

## Target Details

Target:	MS4A4A
Alternative Name:	M4A4A ( <a href="#">MS4A4A Products</a> )
Background:	This gene encodes a member of the membrane-spanning 4A gene family. Members of this

## Target Details

nascent protein family are characterized by common structural features and similar intron/exon splice boundaries and display unique expression patterns among hematopoietic cells and nonlymphoid tissues. Alternative splicing of this gene results in several transcript variants, however, not all transcripts have been fully described.

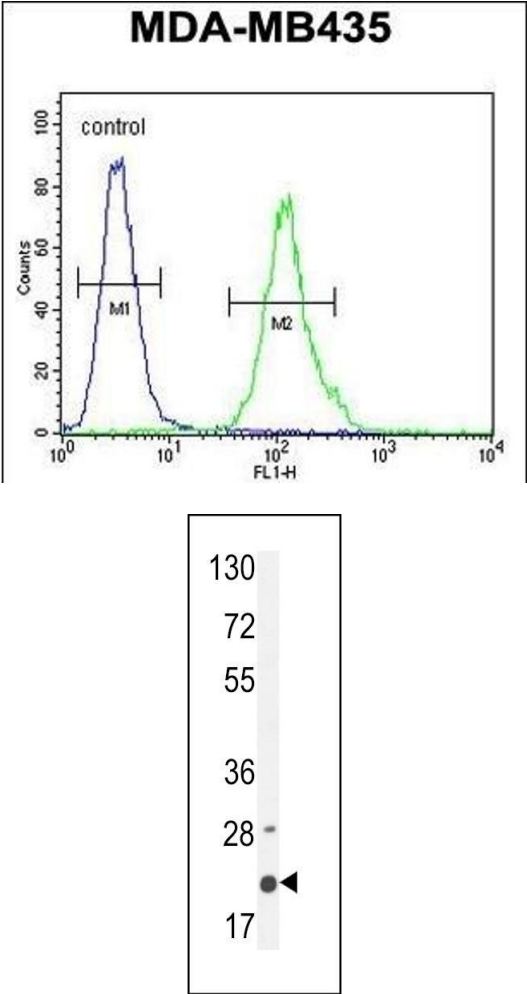
Molecular Weight:	25441
Gene ID:	51338
NCBI Accession:	<a href="#">NP_001230195</a> , <a href="#">NP_076926</a> , <a href="#">NP_683876</a>
UniProt:	<a href="#">Q96JQ5</a>

## Application Details

Application Notes:	WB: 1:1000. FC: 1:10~50
Restrictions:	For Research Use only

## Handling

Format:	Liquid
Buffer:	Purified polyclonal antibody supplied in PBS with 0.09 % (W/V) sodium azide.
Preservative:	Sodium azide
Precaution of Use:	This product contains Sodium azide: a POISONOUS AND HAZARDOUS SUBSTANCE which should be handled by trained staff only.
Storage:	4 °C,-20 °C
Storage Comment:	Maintain refrigerated at 2-8 °C for up to 6 months. For long term storage store at -20 °C in small aliquots to prevent freeze-thaw cycles.
Expiry Date:	6 months



**Flow Cytometry**

**Image 1.** M4A4A Antibody (N-term) (ABIN654770 and ABIN2844450) flow cytometric analysis of MDA-M cells (right histogram) compared to a negative control cell (left histogram). FITC-conjugated goat-anti-rabbit secondary antibodies were used for the analysis.

**Western Blotting**

**Image 2.** M4A4A Antibody (N-term) (ABIN654770 and ABIN2844450) western blot analysis in MDA-M cell line lysates (35 µg/lane). This demonstrates the M4A4A antibody detected the M4A4A protein (arrow).