



[Go to Product page](#)

Datasheet for ABIN654774

anti-THUMPD3 antibody (AA 194-223)

2 Images

Overview

Quantity:	400 µL
Target:	THUMPD3
Binding Specificity:	AA 194-223
Reactivity:	Human
Host:	Rabbit
Clonality:	Polyclonal
Conjugate:	This THUMPD3 antibody is un-conjugated
Application:	Western Blotting (WB), Immunohistochemistry (Paraffin-embedded Sections) (IHC (p))

Product Details

Immunogen:	This THUM3 antibody is generated from rabbits immunized with a KLH conjugated synthetic peptide between 194-223 amino acids from the Central region of human THUM3.
Clone:	RB28715
Isotype:	Ig Fraction
Purification:	This antibody is purified through a protein A column, followed by peptide affinity purification.

Target Details

Target:	THUMPD3
Alternative Name:	THUM3 (THUMPD3 Products)
Molecular Weight:	57003

Target Details

Gene ID:	25917
NCBI Accession:	NP_001107564 , NP_056268
UniProt:	Q9BV44

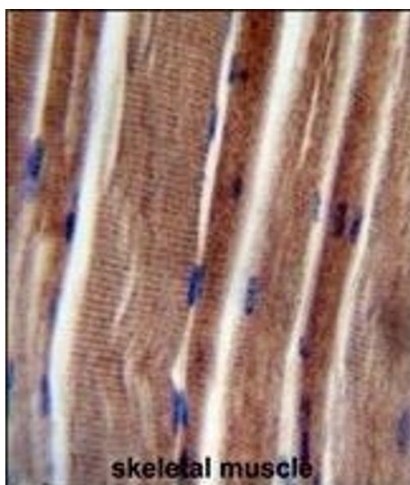
Application Details

Application Notes:	WB: 1:1000. IHC-P: 1:50~100
Restrictions:	For Research Use only

Handling

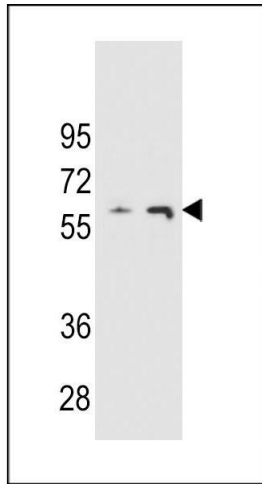
Format:	Liquid
Buffer:	Purified polyclonal antibody supplied in PBS with 0.09 % (W/V) sodium azide.
Preservative:	Sodium azide
Precaution of Use:	This product contains Sodium azide: a POISONOUS AND HAZARDOUS SUBSTANCE which should be handled by trained staff only.
Storage:	4 °C, -20 °C
Storage Comment:	Maintain refrigerated at 2-8 °C for up to 6 months. For long term storage store at -20 °C in small aliquots to prevent freeze-thaw cycles.
Expiry Date:	6 months

Images



Immunohistochemistry (Paraffin-embedded Sections)

Image 1. THUM3 Antibody (Center) (ABIN654774 and ABIN2844455) immunohistochemistry analysis in formalin fixed and paraffin embedded human skeletal muscle followed by peroxidase conjugation of the secondary antibody and DAB staining. This data demonstrates the use of the THUM3 Antibody (Center) for immunohistochemistry. Clinical relevance has not been evaluated.



Western Blotting

Image 2. THUM3 Antibody (Center) (ABIN654774 and ABIN2844455) western blot analysis in and cell line lysates (35 µg/lane). This demonstrates the THUM3 Antibody (Center) antibody detected the THUM3 Antibody (Center) protein (arrow).