

Datasheet for ABIN654776
anti-POU5F1B antibody (C-Term)

2 Images

[Go to Product page](#)

Overview

Quantity:	400 µL
Target:	POU5F1B
Binding Specificity:	AA 214-242, C-Term
Reactivity:	Human
Host:	Rabbit
Clonality:	Polyclonal
Conjugate:	This POU5F1B antibody is un-conjugated
Application:	Western Blotting (WB), Flow Cytometry (FACS)

Product Details

Immunogen:	This P5F1B antibody is generated from rabbits immunized with a KLH conjugated synthetic peptide between 214-242 amino acids from the C-terminal region of human P5F1B.
Clone:	RB28480
Isotype:	Ig Fraction
Predicted Reactivity:	B, M, Pig
Purification:	This antibody is purified through a protein A column, followed by peptide affinity purification.

Target Details

Target:	POU5F1B
Alternative Name:	P5F1B (POU5F1B Products)

Target Details

Background: This intronless gene was thought to be a transcribed pseudogene of POU class 5 homeobox 1, however, it has been reported that this gene can encode a functional protein. The encoded protein is nearly the same length as and highly similar to the POU class 5 homeobox 1 transcription factor, has been shown to be a weak transcriptional activator and may play a role in carcinogenesis and eye development.

Molecular Weight: 38588

Gene ID: 5462

NCBI Accession: [NP_001153014](#)

UniProt: [Q06416](#)

Application Details

Application Notes: WB: 1:1000. FC: 1:10~50

Restrictions: For Research Use only

Handling

Format: Liquid

Buffer: Purified polyclonal antibody supplied in PBS with 0.09 % (W/V) sodium azide.

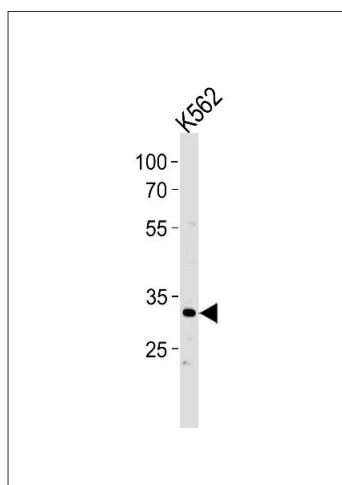
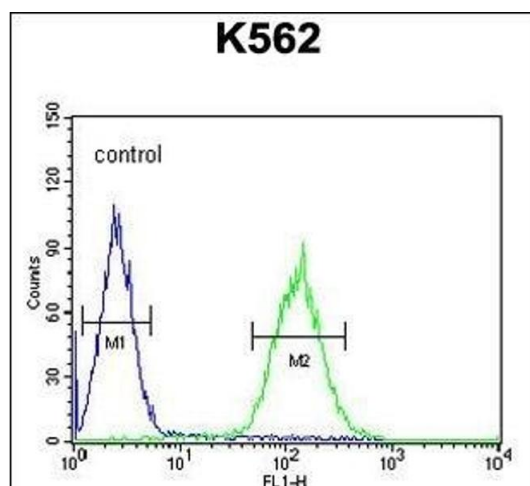
Preservative: Sodium azide

Precaution of Use: This product contains Sodium azide: a POISONOUS AND HAZARDOUS SUBSTANCE which should be handled by trained staff only.

Storage: 4 °C,-20 °C

Storage Comment: Maintain refrigerated at 2-8 °C for up to 6 months. For long term storage store at -20 °C in small aliquots to prevent freeze-thaw cycles.

Expiry Date: 6 months



Flow Cytometry

Image 1. P5F1B Antibody (C-term) (ABIN654776 and ABIN2844457) flow cytometric analysis of K562 cells (right histogram) compared to a negative control cell (left histogram). FITC-conjugated goat-anti-rabbit secondary antibodies were used for the analysis.

Western Blotting

Image 2. P5F1B Antibody (C-term) (ABIN654776 and ABIN2844457) western blot analysis in K562 cell line lysates (35 μ g/lane). This demonstrates the P5F1B antibody detected the P5F1B protein (arrow).