

Datasheet for ABIN654777

anti-Nesprin3 antibody (C-Term)**2** Images[Go to Product page](#)

Overview

Quantity:	400 µL
Target:	Nesprin3 (C14orf49)
Binding Specificity:	AA 852-880, C-Term
Reactivity:	Human, Mouse
Host:	Rabbit
Clonality:	Polyclonal
Conjugate:	This Nesprin3 antibody is un-conjugated
Application:	Western Blotting (WB), Immunohistochemistry (Paraffin-embedded Sections) (IHC (p))

Product Details

Immunogen:	This SYNE3 antibody is generated from rabbits immunized with a KLH conjugated synthetic peptide between 852-880 amino acids from the C-terminal region of human SYNE3.
Clone:	RB28457
Isotype:	Ig Fraction
Purification:	This antibody is purified through a protein A column, followed by peptide affinity purification.

Target Details

Target:	Nesprin3 (C14orf49)
Alternative Name:	SYNE3 (C14orf49 Products)
Background:	Component of SUN-protein-containing multivariate complexes also called LINC complexes

Target Details

which link the nucleoskeleton and cytoskeleton by providing versatile outer nuclear membrane attachment sites for cytoskeletal filaments. Involved in the maintenance of nuclear organization and structural integrity. Probable anchoring protein which tethers the nucleus to the cytoskeleton by binding PLEC which can associate with the intermediate filament system.

Molecular Weight: 112216

Gene ID: 161176

NCBI Accession: [NP_689805](#)

UniProt: [Q6ZMZ3](#)

Pathways: [Maintenance of Protein Location](#)

Application Details

Application Notes: WB: 1:1000. IHC-P: 1:50~100

Restrictions: For Research Use only

Handling

Format: Liquid

Buffer: Purified polyclonal antibody supplied in PBS with 0.09 % (W/V) sodium azide.

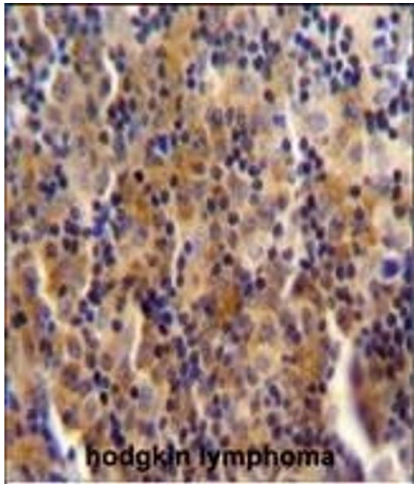
Preservative: Sodium azide

Precaution of Use: This product contains Sodium azide: a POISONOUS AND HAZARDOUS SUBSTANCE which should be handled by trained staff only.

Storage: 4 °C,-20 °C

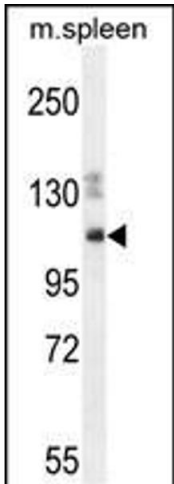
Storage Comment: Maintain refrigerated at 2-8 °C for up to 6 months. For long term storage store at -20 °C in small aliquots to prevent freeze-thaw cycles.

Expiry Date: 6 months



Immunohistochemistry (Paraffin-embedded Sections)

Image 1. SYNE3 antibody (C-term) (ABIN654777 and ABIN2844458) immunohistochemistry analysis in formalin fixed and paraffin embedded human hodgkin lymphoma followed by peroxidase conjugation of the secondary antibody and DAB staining.This data demonstrates the use of SYNE3 antibody (C-term) for immunohistochemistry. Clinical relevance has not been evaluated.



Western Blotting

Image 2. SYNE3 Antibody (C-term) (ABIN654777 and ABIN2844458) western blot analysis in mouse spleen cell line lysates (35 µg/lane).This demonstrates the SYNE3 antibody detected the SYNE3 protein (arrow).