

Datasheet for ABIN654782  
**anti-C20ORF173 antibody (AA 48-76)**



[Go to Product page](#)

2 Images

Overview

Quantity:	400 µL
Target:	C20ORF173
Binding Specificity:	AA 48-76
Reactivity:	Human
Host:	Rabbit
Clonality:	Polyclonal
Conjugate:	This C20ORF173 antibody is un-conjugated
Application:	Western Blotting (WB), Immunohistochemistry (Paraffin-embedded Sections) (IHC (p))

Product Details

Immunogen:	This CT173 antibody is generated from rabbits immunized with a KLH conjugated synthetic peptide between 48-76 amino acids from the Central region of human CT173.
Clone:	RB28487
Isotype:	Ig Fraction
Purification:	This antibody is purified through a protein A column, followed by peptide affinity purification.

Target Details

Target:	C20ORF173
Alternative Name:	CT173 ( <a href="#">C20ORF173 Products</a> )
Molecular Weight:	16552

## Target Details

Gene ID: 140873

NCBI Accession: [NP\\_001138822](#)

UniProt: [Q96LM9](#)

## Application Details

Application Notes: WB: 1:1000. IHC-P: 1:50~100

Restrictions: For Research Use only

## Handling

Format: Liquid

Buffer: Purified polyclonal antibody supplied in PBS with 0.09 % (W/V) sodium azide.

Preservative: Sodium azide

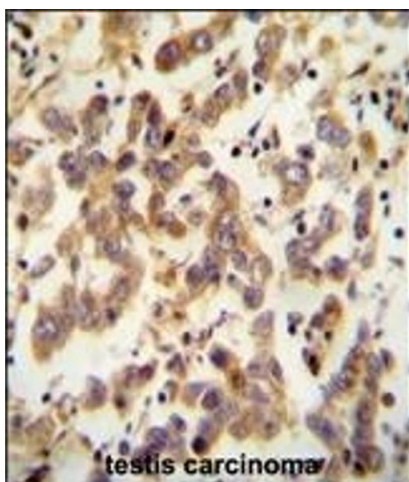
Precaution of Use: This product contains Sodium azide: a POISONOUS AND HAZARDOUS SUBSTANCE which should be handled by trained staff only.

Storage: 4 °C,-20 °C

Storage Comment: Maintain refrigerated at 2-8 °C for up to 6 months. For long term storage store at -20 °C in small aliquots to prevent freeze-thaw cycles.

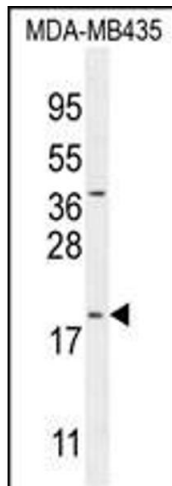
Expiry Date: 6 months

## Images



### Immunohistochemistry (Paraffin-embedded Sections)

**Image 1.** C antibody (Center) (ABIN654782 and ABIN2844463) immunohistochemistry analysis in formalin fixed and paraffin embedded human testis carcinoma followed by peroxidase conjugation of the secondary antibody and DAB staining. This data demonstrates the use of the C antibody (Center) for immunohistochemistry. Clinical relevance has not been evaluated.



### Western Blotting

**Image 2.** C Antibody (Center) (ABIN654782 and ABIN2844463) western blot analysis in MDA-M cell line lysates (35 µg/lane). This demonstrates the C antibody detected the C protein (arrow).