

Datasheet for ABIN654784

anti-LARP6 antibody (N-Term)**3** Images[Go to Product page](#)

Overview

Quantity:	400 µL
Target:	LARP6
Binding Specificity:	AA 7-35, N-Term
Reactivity:	Human
Host:	Rabbit
Clonality:	Polyclonal
Conjugate:	This LARP6 antibody is un-conjugated
Application:	Western Blotting (WB), Flow Cytometry (FACS), Immunohistochemistry (Paraffin-embedded Sections) (IHC (p))

Product Details

Immunogen:	This LARP6 antibody is generated from rabbits immunized with a KLH conjugated synthetic peptide between 7-35 amino acids from the N-terminal region of human LARP6.
Clone:	RB28118
Isotype:	Ig Fraction
Purification:	This antibody is purified through a protein A column, followed by peptide affinity purification.

Target Details

Target:	LARP6
Alternative Name:	LARP6 (LARP6 Products)

Target Details

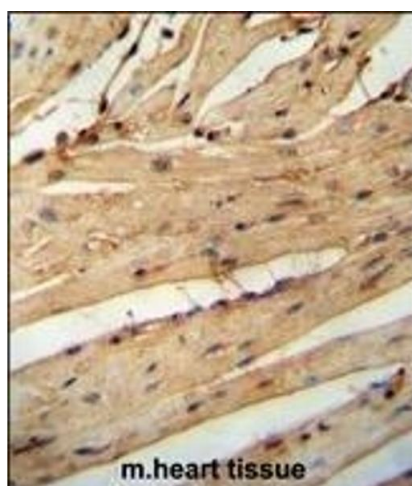
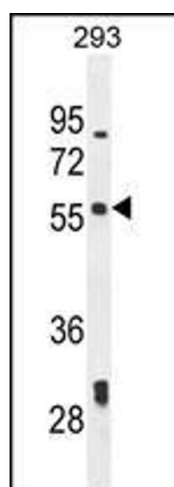
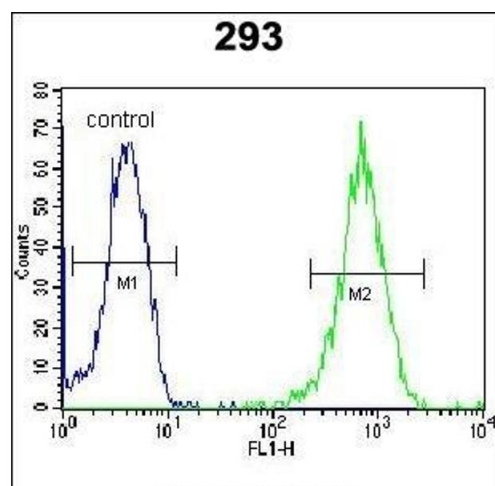
Background:	LARP6 is a member of the La ribonucleoprotein domain family, which all contain one characteristic La motif. LARP6 shuttles between the cytoplasm and nucleus. It is proposed that members of this family play a role in translation and mRNA stability.
Molecular Weight:	54737
Gene ID:	55323
NCBI Accession:	NP_060827 , NP_932062
UniProt:	Q9BRS8

Application Details

Application Notes:	WB: 1:1000. IHC-P: 1:50~100. FC: 1:10~50
Restrictions:	For Research Use only

Handling

Format:	Liquid
Buffer:	Purified polyclonal antibody supplied in PBS with 0.09 % (W/V) sodium azide.
Preservative:	Sodium azide
Precaution of Use:	This product contains Sodium azide: a POISONOUS AND HAZARDOUS SUBSTANCE which should be handled by trained staff only.
Storage:	4 °C, -20 °C
Storage Comment:	Maintain refrigerated at 2-8 °C for up to 6 months. For long term storage store at -20 °C in small aliquots to prevent freeze-thaw cycles.
Expiry Date:	6 months



Flow Cytometry

Image 1. LARP6 Antibody (N-term) (ABIN654784 and ABIN2844464) flow cytometric analysis of 293 cells (right histogram) compared to a negative control cell (left histogram). FITC-conjugated goat-anti-rabbit secondary antibodies were used for the analysis.

Western Blotting

Image 2. LARP6 Antibody (N-term) (ABIN654784 and ABIN2844464) western blot analysis in 293 cell line lysates (35 µg/lane). This demonstrates the LARP6 antibody detected the LARP6 protein (arrow).

Immunohistochemistry (Paraffin-embedded Sections)

Image 3. LARP6 antibody (N-term) (ABIN654784 and ABIN2844464) immunohistochemistry analysis in formalin fixed and paraffin embedded mouse heart tissue followed by peroxidase conjugation of the secondary antibody and DAB staining. This data demonstrates the use of the LARP6 antibody (N-term) for immunohistochemistry. Clinical relevance has not been evaluated.