



[Go to Product page](#)

Datasheet for ABIN654785

## anti-TAPT1 antibody (C-Term)

### 3 Images

#### Overview

Quantity:	400 µL
Target:	TAPT1
Binding Specificity:	AA 530-558, C-Term
Reactivity:	Human, Mouse
Host:	Rabbit
Clonality:	Polyclonal
Conjugate:	This TAPT1 antibody is un-conjugated
Application:	Western Blotting (WB), Flow Cytometry (FACS)

#### Product Details

Immunogen:	This TAPT1 antibody is generated from rabbits immunized with a KLH conjugated synthetic peptide between 530-558 amino acids from the C-terminal region of human TAPT1.
Clone:	RB28308
Isotype:	Ig Fraction
Predicted Reactivity:	C
Purification:	This antibody is purified through a protein A column, followed by peptide affinity purification.

#### Target Details

Target:	TAPT1
Alternative Name:	TAPT1 ( <a href="#">TAPT1 Products</a> )

## Target Details

---

Background:	This gene encodes a highly conserved, putative transmembrane protein. A mutation in the mouse ortholog of this gene results in homeotic, posterior-to-anterior transformations of the axial skeleton which are similar to the phenotype of mouse homeobox C8 gene mutants. This gene is proposed to function downstream of homeobox C8 to transduce extracellular patterning information during axial skeleton development. An alternatively spliced transcript variant encoding a substantially different isoform has been described, but its biological validity has not been determined.
Molecular Weight:	64260
Gene ID:	202018
NCBI Accession:	<a href="#">NP_699196</a>
UniProt:	<a href="#">Q6NXT6</a>
Pathways:	<a href="#">SARS-CoV-2 Protein Interactome</a>

## Application Details

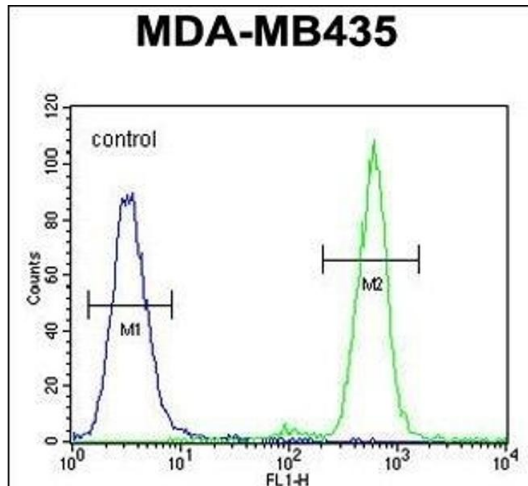
---

Application Notes:	WB: 1:1000. WB: 1:1000. FC: 1:10~50
Restrictions:	For Research Use only

## Handling

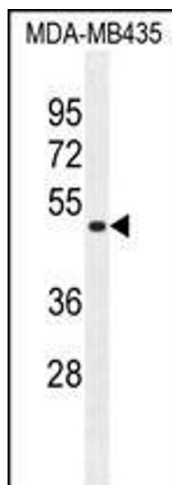
---

Format:	Liquid
Buffer:	Purified polyclonal antibody supplied in PBS with 0.09 % (W/V) sodium azide.
Preservative:	Sodium azide
Precaution of Use:	This product contains Sodium azide: a POISONOUS AND HAZARDOUS SUBSTANCE which should be handled by trained staff only.
Storage:	4 °C,-20 °C
Storage Comment:	Maintain refrigerated at 2-8 °C for up to 6 months. For long term storage store at -20 °C in small aliquots to prevent freeze-thaw cycles.
Expiry Date:	6 months



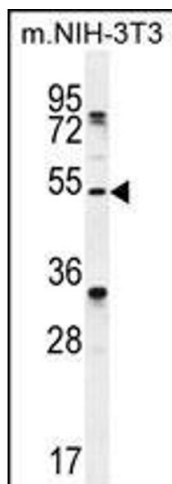
### Flow Cytometry

**Image 1.** TT1 Antibody (C-term) 10831b flow cytometric analysis of MDA-M cells (right histogram) compared to a negative control cell (left histogram). FITC-conjugated goat-anti-rabbit secondary antibodies were used for the analysis.



### Western Blotting

**Image 2.** TT1 Antibody (C-term) 10831b western blot analysis in MDA-M cell line lysates (35 µg/lane). This demonstrates the TT1 antibody detected the TT1 protein (arrow).



### Western Blotting

**Image 3.** TT1 Antibody (C-term) 10831b western blot analysis in mouse NIH-3T3 cell line lysates (35 µg/lane). This demonstrates the TT1 antibody detected the TT1 protein (arrow).