



[Go to Product page](#)

Datasheet for ABIN654804

## anti-Schlafen-Like 1 antibody (N-Term)

### 1 Image

#### Overview

Quantity:	400 µL
Target:	Schlafen-Like 1 (SLFN1)
Binding Specificity:	AA 62-91, N-Term
Reactivity:	Human, Mouse
Host:	Rabbit
Clonality:	Polyclonal
Conjugate:	This Schlafen-Like 1 antibody is un-conjugated
Application:	Western Blotting (WB)

#### Product Details

Immunogen:	This SLFN1 antibody is generated from rabbits immunized with a KLH conjugated synthetic peptide between 62-91 amino acids from the N-terminal region of human SLFN1.
Clone:	RB28063
Isotype:	Ig Fraction
Predicted Reactivity:	Pr
Purification:	This antibody is purified through a protein A column, followed by peptide affinity purification.

#### Target Details

Target:	Schlafen-Like 1 (SLFN1)
Alternative Name:	SLFN1 ( <a href="#">SLFN1 Products</a> )

## Target Details

---

Background:	SLFN1 belongs to the Schlafen family. The function of the SLFN1 protein remains unknown. There are four different isoforms.
Molecular Weight:	45603
Gene ID:	200172
NCBI Accession:	<a href="#">NP_001161719</a> , <a href="#">NP_659427</a>
UniProt:	<a href="#">Q499Z3</a>

## Application Details

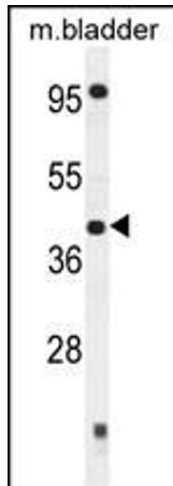
---

Application Notes:	WB: 1:1000
Restrictions:	For Research Use only

## Handling

---

Format:	Liquid
Buffer:	Purified polyclonal antibody supplied in PBS with 0.09 % (W/V) sodium azide.
Preservative:	Sodium azide
Precaution of Use:	This product contains Sodium azide: a POISONOUS AND HAZARDOUS SUBSTANCE which should be handled by trained staff only.
Storage:	4 °C,-20 °C
Storage Comment:	Maintain refrigerated at 2-8 °C for up to 6 months. For long term storage store at -20 °C in small aliquots to prevent freeze-thaw cycles.
Expiry Date:	6 months



### Western Blotting

**Image 1.** SLFN1 Antibody (N-term) (ABIN654804 and ABIN2844479) western blot analysis in mouse bladder tissue lysates (35 µg/lane). This demonstrates the SLFN1 antibody detected the SLFN1 protein (arrow).