

Datasheet for ABIN654820  
**anti-WDR41 antibody (C-Term)**[Go to Product page](#)

## 3 Images

## Overview

Quantity:	400 µL
Target:	WDR41
Binding Specificity:	AA 249-277, C-Term
Reactivity:	Human, Mouse
Host:	Rabbit
Clonality:	Polyclonal
Conjugate:	This WDR41 antibody is un-conjugated
Application:	Western Blotting (WB), Immunohistochemistry (Paraffin-embedded Sections) (IHC (p))

## Product Details

Immunogen:	This WDR41 antibody is generated from rabbits immunized with a KLH conjugated synthetic peptide between 249-277 amino acids from the C-terminal region of human WDR41.
Clone:	RB28275
Isotype:	Ig Fraction
Purification:	This antibody is purified through a protein A column, followed by peptide affinity purification.

## Target Details

Target:	WDR41
Alternative Name:	WDR41 ( <a href="#">WDR41 Products</a> )
Molecular Weight:	51728

## Target Details

Gene ID:	55255
NCBI Accession:	<a href="#">NP_060738</a>
UniProt:	<a href="#">Q9HAD4</a>

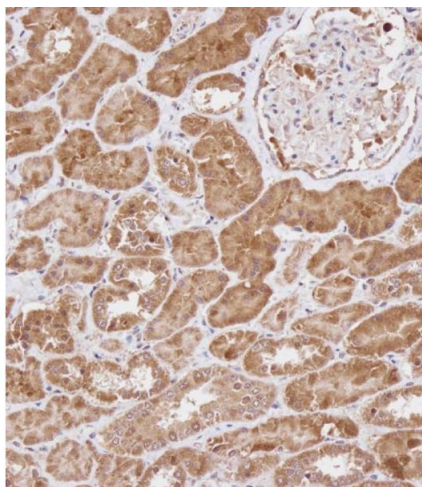
## Application Details

Application Notes:	WB: 1:1000. IHC-P: 1:100. IHC-P: 1:100
Restrictions:	For Research Use only

## Handling

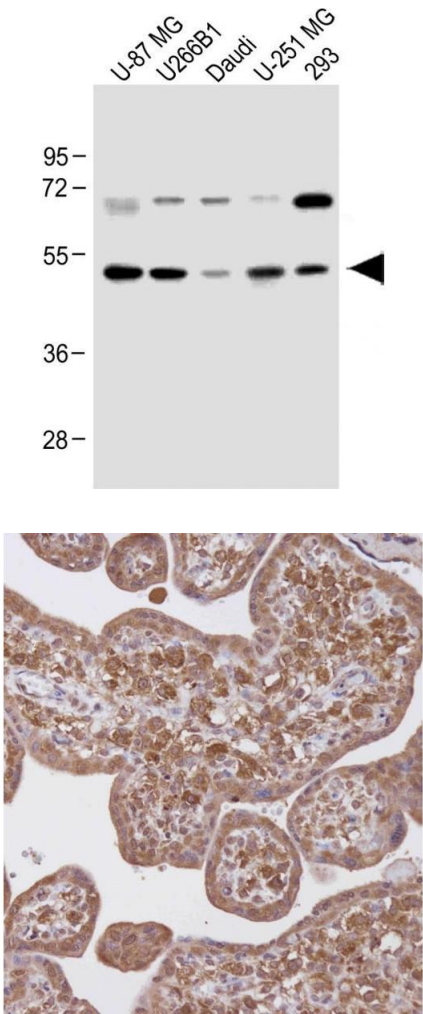
Format:	Liquid
Buffer:	Purified polyclonal antibody supplied in PBS with 0.09 % (W/V) sodium azide.
Preservative:	Sodium azide
Precaution of Use:	This product contains Sodium azide: a POISONOUS AND HAZARDOUS SUBSTANCE which should be handled by trained staff only.
Storage:	4 °C,-20 °C
Storage Comment:	Maintain refrigerated at 2-8 °C for up to 6 months. For long term storage store at -20 °C in small aliquots to prevent freeze-thaw cycles.
Expiry Date:	6 months

## Images



### Immunohistochemistry (Paraffin-embedded Sections)

**Image 1.** Immunohistochemical analysis of B on paraffin-embedded Human kidney tissue. Tissue was fixed with formaldehyde at room temperature. Heat induced epitope retrieval was performed by EDTA buffer ( pH 9. 0). Samples were incubated with primary Antibody (1:100) for 1 hour at room temperature. Undiluted CRF Anti-Polyvalent HRP Polymer antibody was used as the secondary antibody.



### Western Blotting

**Image 2.** All lanes : Anti-WDR41 Antibody (C-term) at 1:1000 dilution Lane 1: U-87 MG whole cell lysate Lane 2: U266B1 whole cell lysate Lane 3: Daudi whole cell lysate Lane 4: U-251 MG whole cell lysate Lane 5: 293 whole cell lysate Lysates/proteins at 20 µg per lane. Secondary Goat Anti-Rabbit IgG, (H+L), Peroxidase conjugated at 1/10000 dilution. Predicted band size : 52 kDa Blocking/Dilution buffer: 5 % NFDM/TBST.

### Immunohistochemistry (Paraffin-embedded Sections)

**Image 3.** Immunohistochemical analysis of B on paraffin-embedded Human placenta tissue. Tissue was fixed with formaldehyde at room temperature. Heat induced epitope retrieval was performed by EDTA buffer ( pH 9. 0). Samples were incubated with primary Antibody (1:100) for 1 hour at room temperature. Undiluted CRF Anti-Polyvalent HRP Polymer antibody was used as the secondary antibody.