

Datasheet for ABIN654821
anti-PQLC1 antibody (AA 100-128)

2 Images

[Go to Product page](#)

Overview

Quantity:	400 µL
Target:	PQLC1
Binding Specificity:	AA 100-128
Reactivity:	Human, Mouse
Host:	Rabbit
Clonality:	Polyclonal
Conjugate:	This PQLC1 antibody is un-conjugated
Application:	Western Blotting (WB), Immunohistochemistry (Paraffin-embedded Sections) (IHC (p))

Product Details

Immunogen:	This PQLC1 antibody is generated from rabbits immunized with a KLH conjugated synthetic peptide between 100-128 amino acids from the Central region of human PQLC1.
Clone:	RB27733
Isotype:	Ig Fraction
Purification:	This antibody is purified through a protein A column, followed by peptide affinity purification.

Target Details

Target:	PQLC1
Alternative Name:	PQLC1 (PQLC1 Products)
Molecular Weight:	30478

Target Details

Gene ID:	80148
NCBI Accession:	NP_001139815 , NP_001139817 , NP_079354
UniProt:	Q8N2U9

Application Details

Application Notes:	WB: 1:1000. IHC-P: 1:50~100
Restrictions:	For Research Use only

Handling

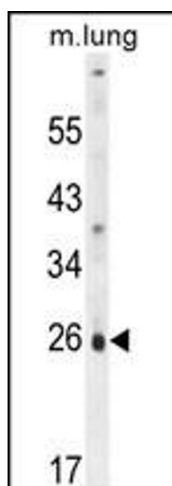
Format:	Liquid
Buffer:	Purified polyclonal antibody supplied in PBS with 0.09 % (W/V) sodium azide.
Preservative:	Sodium azide
Precaution of Use:	This product contains Sodium azide: a POISONOUS AND HAZARDOUS SUBSTANCE which should be handled by trained staff only.
Storage:	4 °C,-20 °C
Storage Comment:	Maintain refrigerated at 2-8 °C for up to 6 months. For long term storage store at -20 °C in small aliquots to prevent freeze-thaw cycles.
Expiry Date:	6 months

Images



Immunohistochemistry (Paraffin-embedded Sections)

Image 1. PQLC1 antibody (Center) (ABIN654821 and ABIN2844494) immunohistochemistry analysis in formalin fixed and paraffin embedded human brain tissue followed by peroxidase conjugation of the secondary antibody and DAB staining. This data demonstrates the use of the PQLC1 antibody (Center) for immunohistochemistry. Clinical relevance has not been evaluated.



Western Blotting

Image 2. PQLC1 Antibody (Center) (ABIN654821 and ABIN2844494) western blot analysis in mouse lung tissue lysates (35 µg/lane). This demonstrates the PQLC1 antibody detected the PQLC1 protein (arrow).