

Datasheet for ABIN654822
anti-GLB1L2 antibody (C-Term)[Go to Product page](#)

2 Images

Overview

Quantity:	400 µL
Target:	GLB1L2
Binding Specificity:	AA 479-507, C-Term
Reactivity:	Human
Host:	Rabbit
Clonality:	Polyclonal
Conjugate:	This GLB1L2 antibody is un-conjugated
Application:	Western Blotting (WB), Immunohistochemistry (Paraffin-embedded Sections) (IHC (p))

Product Details

Immunogen:	This GLB1L2 antibody is generated from rabbits immunized with a KLH conjugated synthetic peptide between 479-507 amino acids from the C-terminal region of human GLB1L2.
Clone:	RB27759
Isotype:	Ig Fraction
Purification:	This antibody is purified through a protein A column, followed by peptide affinity purification.

Target Details

Target:	GLB1L2
Alternative Name:	GLB1L2 (GLB1L2 Products)
Molecular Weight:	72079

Target Details

Gene ID:	89944
NCBI Accession:	NP_612351
UniProt:	Q8IW92

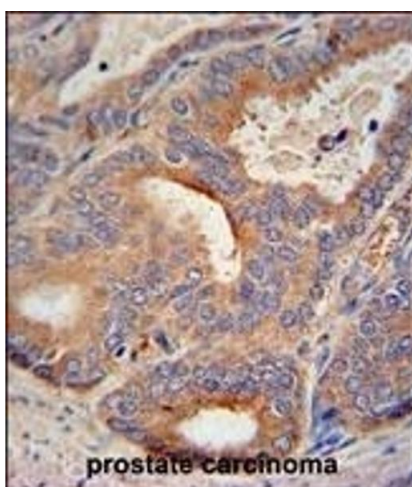
Application Details

Application Notes:	WB: 1:1000. IHC-P: 1:50~100
Restrictions:	For Research Use only

Handling

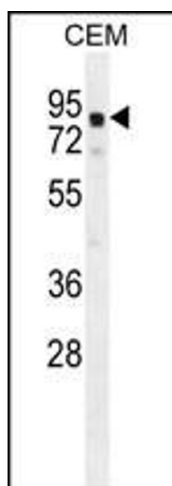
Format:	Liquid
Buffer:	Purified polyclonal antibody supplied in PBS with 0.09 % (W/V) sodium azide.
Preservative:	Sodium azide
Precaution of Use:	This product contains Sodium azide: a POISONOUS AND HAZARDOUS SUBSTANCE which should be handled by trained staff only.
Storage:	4 °C,-20 °C
Storage Comment:	Maintain refrigerated at 2-8 °C for up to 6 months. For long term storage store at -20 °C in small aliquots to prevent freeze-thaw cycles.
Expiry Date:	6 months

Images



Immunohistochemistry (Paraffin-embedded Sections)

Image 1. GLB1L2 antibody (C-term) (ABIN654822 and ABIN2844495) immunohistochemistry analysis in formalin fixed and paraffin embedded human prostate carcinoma followed by peroxidase conjugation of the secondary antibody and DAB staining. This data demonstrates the use of the GLB1L2 antibody (C-term) for immunohistochemistry. Clinical relevance has not been evaluated.



Western Blotting

Image 2. GLB1L2 Antibody (C-term) (ABIN654822 and ABIN2844495) western blot analysis in CEM cell line lysates (35 µg/lane). This demonstrates the GLB1L2 antibody detected the GLB1L2 protein (arrow).