



[Go to Product page](#)

Datasheet for ABIN654823

anti-PTCD2 antibody (AA 102-131)

1 Image

Overview

Quantity:	400 µL
Target:	PTCD2
Binding Specificity:	AA 102-131
Reactivity:	Human, Mouse
Host:	Rabbit
Clonality:	Polyclonal
Conjugate:	This PTCD2 antibody is un-conjugated
Application:	Western Blotting (WB)

Product Details

Immunogen:	This PTCD2 antibody is generated from rabbits immunized with a KLH conjugated synthetic peptide between 102-131 amino acids from the Central region of human PTCD2.
Clone:	RB27811
Isotype:	Ig Fraction
Purification:	This antibody is purified through a protein A column, followed by peptide affinity purification.

Target Details

Target:	PTCD2
Alternative Name:	PTCD2 (PTCD2 Products)
Molecular Weight:	43968

Target Details

Gene ID: 79810

NCBI Accession: [NP_079030](#)

UniProt: [Q8WV60](#)

Application Details

Application Notes: WB: 1:1000

Restrictions: For Research Use only

Handling

Format: Liquid

Buffer: Purified polyclonal antibody supplied in PBS with 0.09 % (W/V) sodium azide.

Preservative: Sodium azide

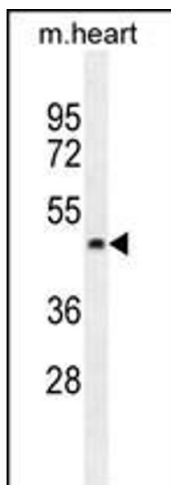
Precaution of Use: This product contains Sodium azide: a POISONOUS AND HAZARDOUS SUBSTANCE which should be handled by trained staff only.

Storage: 4 °C, -20 °C

Storage Comment: Maintain refrigerated at 2-8 °C for up to 6 months. For long term storage store at -20 °C in small aliquots to prevent freeze-thaw cycles.

Expiry Date: 6 months

Images



Western Blotting

Image 1. PTC2 Antibody (Center) (ABIN654823 and ABIN2844496) western blot analysis in mouse heart tissue lysates (35 µg/lane). This demonstrates the PTC2 antibody detected the PTC2 protein (arrow).