



[Go to Product page](#)

Datasheet for ABIN654826  
**anti-WDR49 antibody (C-Term)**

3 Images

### Overview

Quantity:	400 µL
Target:	WDR49
Binding Specificity:	AA 550-579, C-Term
Reactivity:	Human
Host:	Rabbit
Clonality:	Polyclonal
Conjugate:	This WDR49 antibody is un-conjugated
Application:	Western Blotting (WB), Flow Cytometry (FACS), Immunohistochemistry (Paraffin-embedded Sections) (IHC (p))

### Product Details

Immunogen:	This WDR49 antibody is generated from rabbits immunized with a KLH conjugated synthetic peptide between 550-579 amino acids from the C-terminal region of human WDR49.
Clone:	RB27896
Isotype:	Ig Fraction
Purification:	This antibody is purified through a protein A column, followed by peptide affinity purification.

### Target Details

Target:	WDR49
Alternative Name:	WDR49 ( <a href="#">WDR49 Products</a> )

## Target Details

---

Background:	WDR49 contains 8 WD repeats. The exact function of WDR49 remains unknown. There are two named isoforms.
Molecular Weight:	79295
Gene ID:	151790
NCBI Accession:	<a href="#">NP_849146</a>
UniProt:	<a href="#">Q8IV35</a>

## Application Details

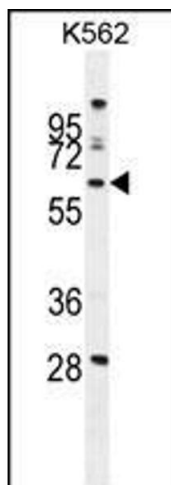
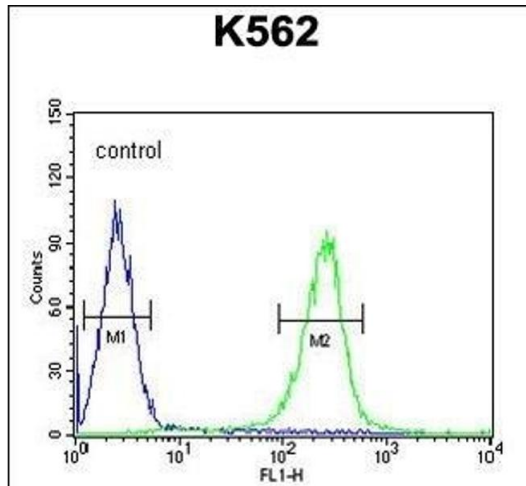
---

Application Notes:	WB: 1:1000. IHC-P: 1:50~100. FC: 1:10~50
Restrictions:	For Research Use only

## Handling

---

Format:	Liquid
Buffer:	Purified polyclonal antibody supplied in PBS with 0.09 % (W/V) sodium azide.
Preservative:	Sodium azide
Precaution of Use:	This product contains Sodium azide: a POISONOUS AND HAZARDOUS SUBSTANCE which should be handled by trained staff only.
Storage:	4 °C,-20 °C
Storage Comment:	Maintain refrigerated at 2-8 °C for up to 6 months. For long term storage store at -20 °C in small aliquots to prevent freeze-thaw cycles.
Expiry Date:	6 months



### Flow Cytometry

**Image 1.** WDR49 Antibody (C-term) (ABIN654826 and ABIN2844501) flow cytometric analysis of K562 cells (right histogram) compared to a negative control cell (left histogram). FITC-conjugated goat-anti-rabbit secondary antibodies were used for the analysis.

### Western Blotting

**Image 2.** WDR49 Antibody (C-term) (ABIN654826 and ABIN2844501) western blot analysis in K562 cell line lysates (35 µg/lane). This demonstrates the WDR49 antibody detected the WDR49 protein (arrow).

### Immunohistochemistry (Paraffin-embedded Sections)

**Image 3.** WDR49 antibody (C-term) (ABIN654826 and ABIN2844501) immunohistochemistry analysis in formalin fixed and paraffin embedded human skeletal muscle followed by peroxidase conjugation of the secondary antibody and DAB staining. This data demonstrates the use of the WDR49 antibody (C-term) for immunohistochemistry. Clinical relevance has not been evaluated.