



[Go to Product page](#)

Datasheet for ABIN654828
anti-KRT80 antibody (C-Term)

1 Image

Overview

Quantity:	400 µL
Target:	KRT80
Binding Specificity:	AA 404-432, C-Term
Reactivity:	Human
Host:	Rabbit
Clonality:	Polyclonal
Conjugate:	This KRT80 antibody is un-conjugated
Application:	Western Blotting (WB)

Product Details

Immunogen:	This KRT80 antibody is generated from rabbits immunized with a KLH conjugated synthetic peptide between 404-432 amino acids from the C-terminal region of human KRT80.
Clone:	RB28277
Isotype:	Ig Fraction
Purification:	This antibody is purified through a protein A column, followed by peptide affinity purification.

Target Details

Target:	KRT80
Alternative Name:	KRT80 (KRT80 Products)
Background:	Keratins are intermediate filament proteins responsible for the structural integrity of epithelial

Target Details

cells and are subdivided into epithelial keratins and hair keratins. This gene's expression profile shows that it encodes a type II epithelial keratin, although structurally the encoded protein is more like a type II hair keratin. This protein is involved in cell differentiation, localizing near desmosomal plaques in earlier stages of differentiation but then dispersing throughout the cytoplasm in terminally differentiating cells. The type II keratins are clustered in a region of chromosome 12q13. Two transcript variants encoding two different fully functional isoforms have been found for this gene.

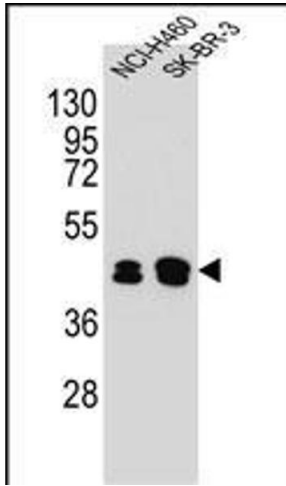
Molecular Weight:	50525
Gene ID:	144501
NCBI Accession:	NP_001074961 , NP_872313
UniProt:	Q6KB66

Application Details

Application Notes:	WB: 1:1000
Restrictions:	For Research Use only

Handling

Format:	Liquid
Buffer:	Purified polyclonal antibody supplied in PBS with 0.09 % (W/V) sodium azide.
Preservative:	Sodium azide
Precaution of Use:	This product contains Sodium azide: a POISONOUS AND HAZARDOUS SUBSTANCE which should be handled by trained staff only.
Storage:	4 °C,-20 °C
Storage Comment:	Maintain refrigerated at 2-8 °C for up to 6 months. For long term storage store at -20 °C in small aliquots to prevent freeze-thaw cycles.
Expiry Date:	6 months



Western Blotting

Image 1. KRT80 Antibody (C-term) (ABIN654828 and ABIN2844502) western blot analysis in NCI-,SK-BR-3 cell line lysates (35 µg/lane). This demonstrates the KRT80 antibody detected the KRT80 protein (arrow).