



[Go to Product page](#)

Datasheet for ABIN654830  
**anti-MAGIX antibody (C-Term)**

1 Image

Overview

Quantity:	400 µL
Target:	MAGIX
Binding Specificity:	AA 266-294, C-Term
Reactivity:	Human
Host:	Rabbit
Clonality:	Polyclonal
Conjugate:	This MAGIX antibody is un-conjugated
Application:	Western Blotting (WB)

Product Details

Immunogen:	This MAGIX antibody is generated from rabbits immunized with a KLH conjugated synthetic peptide between 266-294 amino acids from the C-terminal region of human MAGIX.
Clone:	RB28315
Isotype:	Ig Fraction
Purification:	This antibody is purified through a protein A column, followed by peptide affinity purification.

Target Details

Target:	MAGIX
Alternative Name:	MAGIX ( <a href="#">MAGIX Products</a> )
Molecular Weight:	35273

## Target Details

Gene ID: 79917

NCBI Accession: [NP\\_001093151](#), [NP\\_001093152](#), [NP\\_079135](#)

UniProt: [Q9H6Y5](#)

## Application Details

Application Notes: WB: 1:1000

Restrictions: For Research Use only

## Handling

Format: Liquid

Buffer: Purified polyclonal antibody supplied in PBS with 0.09 % (W/V) sodium azide.

Preservative: Sodium azide

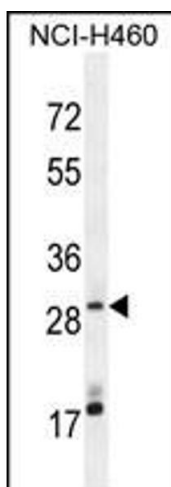
Precaution of Use: This product contains Sodium azide: a POISONOUS AND HAZARDOUS SUBSTANCE which should be handled by trained staff only.

Storage: 4 °C, -20 °C

Storage Comment: Maintain refrigerated at 2-8 °C for up to 6 months. For long term storage store at -20 °C in small aliquots to prevent freeze-thaw cycles.

Expiry Date: 6 months

## Images



### Western Blotting

**Image 1.** GIX Antibody (C-term) (ABIN654830 and ABIN2844503) western blot analysis in NCI- cell line lysates (35 µg/lane). This demonstrates the GIX antibody detected the GIX protein (arrow).