



Datasheet for ABIN654842
anti-LDHAL6A antibody (AA 154-183)



[Go to Product page](#)

1 Image

Overview

| | |
|----------------------|--|
| Quantity: | 400 µL |
| Target: | LDHAL6A |
| Binding Specificity: | AA 154-183 |
| Reactivity: | Human |
| Host: | Rabbit |
| Clonality: | Polyclonal |
| Conjugate: | This LDHAL6A antibody is un-conjugated |
| Application: | Western Blotting (WB) |

Product Details

| | |
|---------------|---|
| Immunogen: | This LDHAL6A antibody is generated from rabbits immunized with a KLH conjugated synthetic peptide between 154-183 amino acids from the Central region of human LDHAL6A. |
| Clone: | RB28411 |
| Isotype: | Ig Fraction |
| Purification: | This antibody is purified through a protein A column, followed by peptide affinity purification. |

Target Details

| | |
|-------------------|---|
| Target: | LDHAL6A |
| Alternative Name: | LDHAL6A (LDHAL6A Products) |
| Background: | Displays an lactate dehydrogenase activity. Significantly increases the transcriptional activity of |

Target Details

JUN, when overexpressed.

Molecular Weight: 36507

Gene ID: 160287

NCBI Accession: [NP_001137543](#), [NP_659409](#)

UniProt: [Q6ZMR3](#)

Application Details

Application Notes: WB: 1:1000

Restrictions: For Research Use only

Handling

Format: Liquid

Buffer: Purified polyclonal antibody supplied in PBS with 0.09 % (W/V) sodium azide.

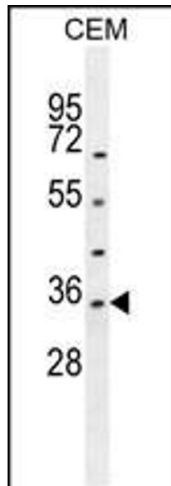
Preservative: Sodium azide

Precaution of Use: This product contains Sodium azide: a POISONOUS AND HAZARDOUS SUBSTANCE which should be handled by trained staff only.

Storage: 4 °C, -20 °C

Storage Comment: Maintain refrigerated at 2-8 °C for up to 6 months. For long term storage store at -20 °C in small aliquots to prevent freeze-thaw cycles.

Expiry Date: 6 months



Western Blotting

Image 1. LDHAL6A Antibody (Center) (ABIN654842 and ABIN2844509) western blot analysis in CEM cell line lysates (35 µg/lane). This demonstrates the LDHAL6A antibody detected the LDHAL6A protein (arrow).