

Datasheet for ABIN654845
anti-LCE1A antibody (C-Term)

2 Images

[Go to Product page](#)

Overview

Quantity:	400 µL
Target:	LCE1A
Binding Specificity:	AA 54-83, C-Term
Reactivity:	Human
Host:	Rabbit
Clonality:	Polyclonal
Conjugate:	This LCE1A antibody is un-conjugated
Application:	Western Blotting (WB), Immunohistochemistry (Paraffin-embedded Sections) (IHC (p))

Product Details

Immunogen:	This LCE1A antibody is generated from rabbits immunized with a KLH conjugated synthetic peptide between 54-83 amino acids from the C-terminal region of human LCE1A.
Clone:	RB28426
Isotype:	Ig Fraction
Purification:	This antibody is purified through a protein A column, followed by peptide affinity purification.

Target Details

Target:	LCE1A
Alternative Name:	LCE1A (LCE1A Products)
Background:	LCE1A belongs to the late cornified envelope (LCE) gene cluster within the epidermal

Target Details

differentiation complex (EDC) on chromosome 1. The LCE cluster contains multiple conserved genes that encode stratum corneum proteins, and these genes are expressed relatively late during fetal assembly of the skin cornified envelope (Jackson et al., 2005 [PubMed 15854049]). For further information on the LCE gene cluster, see GENE FAMILY below.

Molecular Weight: 10982

Gene ID: 353131

NCBI Accession: [NP_848125](#)

UniProt: [Q5T7P2](#)

Application Details

Application Notes: WB: 1:1000. IHC-P: 1:50~100

Restrictions: For Research Use only

Handling

Format: Liquid

Buffer: Purified polyclonal antibody supplied in PBS with 0.09 % (W/V) sodium azide.

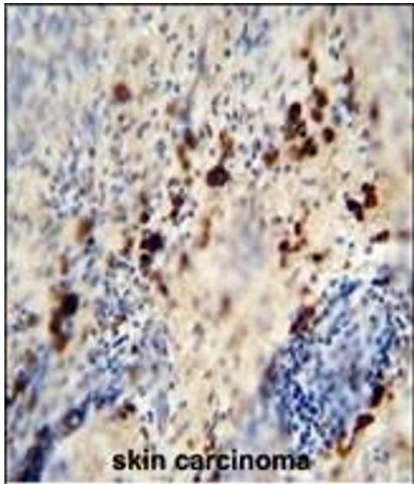
Preservative: Sodium azide

Precaution of Use: This product contains Sodium azide: a POISONOUS AND HAZARDOUS SUBSTANCE which should be handled by trained staff only.

Storage: 4 °C, -20 °C

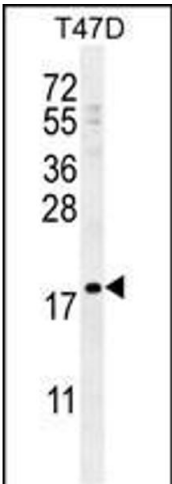
Storage Comment: Maintain refrigerated at 2-8 °C for up to 6 months. For long term storage store at -20 °C in small aliquots to prevent freeze-thaw cycles.

Expiry Date: 6 months



Immunohistochemistry (Paraffin-embedded Sections)

Image 1. LCE1A antibody (C-term) (ABIN654845 and ABIN2844511) immunohistochemistry analysis in formalin fixed and paraffin embedded human skin carcinoma followed by peroxidase conjugation of the secondary antibody and DAB staining. This data demonstrates the use of the LCE1A antibody (C-term) for immunohistochemistry. Clinical relevance has not been evaluated.



Western Blotting

Image 2. LCE1A Antibody (C-term) (ABIN654845 and ABIN2844511) western blot analysis in T47D cell line lysates (35 µg/lane). This demonstrates the LCE1A antibody detected the LCE1A protein (arrow).