

Datasheet for ABIN654847

anti-AMAC1L2 antibody (N-Term)**2** Images[Go to Product page](#)

Overview

Quantity:	400 µL
Target:	AMAC1L2 (SLC35G5)
Binding Specificity:	AA 1-30, N-Term
Reactivity:	Human
Host:	Rabbit
Clonality:	Polyclonal
Conjugate:	This AMAC1L2 antibody is un-conjugated
Application:	Western Blotting (WB), Flow Cytometry (FACS)

Product Details

Immunogen:	This AMAC1L2 antibody is generated from rabbits immunized with a KLH conjugated synthetic peptide between 1-30 amino acids from the N-terminal region of human AMAC1L2.
Clone:	RB28471
Isotype:	Ig Fraction
Purification:	This antibody is purified through a protein A column, followed by peptide affinity purification.

Target Details

Target:	AMAC1L2 (SLC35G5)
Alternative Name:	AMAC1L2 (SLC35G5 Products)
Background:	This gene seems to be intronless. It has high sequence similarity to the gene encoding acyl-

Target Details

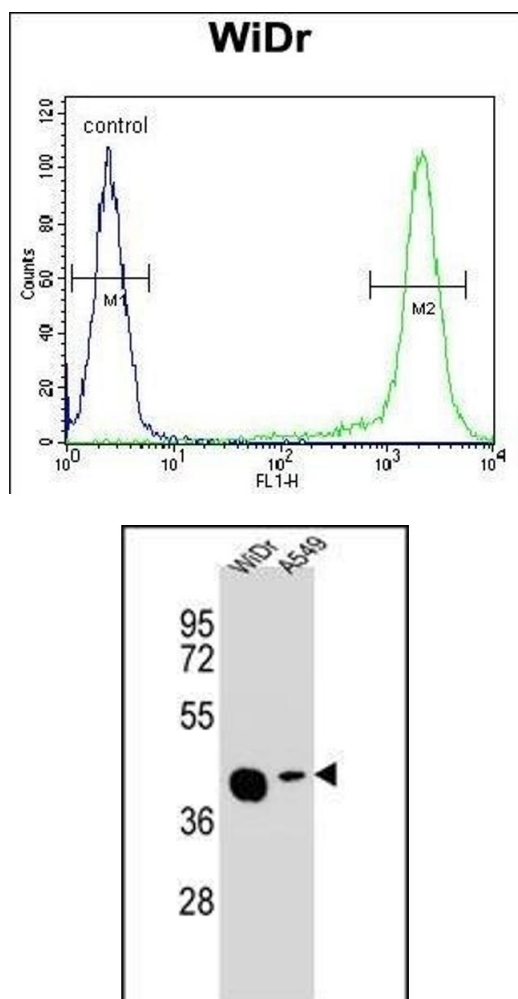
	malonyl condensing enzyme on chromosome 17.
Molecular Weight:	35161
Gene ID:	83650
NCBI Accession:	NP_473369
UniProt:	Q96KT7

Application Details

Application Notes:	WB: 1:1000. FC: 1:10~50
Restrictions:	For Research Use only

Handling

Format:	Liquid
Buffer:	Purified polyclonal antibody supplied in PBS with 0.09 % (W/V) sodium azide.
Preservative:	Sodium azide
Precaution of Use:	This product contains Sodium azide: a POISONOUS AND HAZARDOUS SUBSTANCE which should be handled by trained staff only.
Storage:	4 °C,-20 °C
Storage Comment:	Maintain refrigerated at 2-8 °C for up to 6 months. For long term storage store at -20 °C in small aliquots to prevent freeze-thaw cycles.
Expiry Date:	6 months



Flow Cytometry

Image 1. AC1L2 Antibody (N-term) (ABIN654847 and ABIN2844513) flow cytometric analysis of WiDr cells (right histogram) compared to a negative control cell (left histogram). FITC-conjugated goat-anti-rabbit secondary antibodies were used for the analysis.

Western Blotting

Image 2. AC1L2 Antibody (N-term) (ABIN654847 and ABIN2844513) western blot analysis in WiDr, A549 cell line lysates (35 µg/lane). This demonstrates the AC1L2 antibody detected the AC1L2 protein (arrow).