

Datasheet for ABIN654857
anti-BTNL3 antibody (C-Term)



[Go to Product page](#)

2 Images

Overview

Quantity:	400 µL
Target:	BTNL3
Binding Specificity:	AA 427-455, C-Term
Reactivity:	Human
Host:	Rabbit
Clonality:	Polyclonal
Conjugate:	This BTNL3 antibody is un-conjugated
Application:	Western Blotting (WB), Flow Cytometry (FACS)

Product Details

Immunogen:	This BTNL3 antibody is generated from rabbits immunized with a KLH conjugated synthetic peptide between 427-455 amino acids from the C-terminal region of human BTNL3.
Clone:	RB28576
Isotype:	Ig Fraction
Purification:	This antibody is purified through a protein A column, followed by peptide affinity purification.

Target Details

Target:	BTNL3
Alternative Name:	BTNL3 (BTNL3 Products)
Background:	BTNL3 is expressed in small intestine, colon, testis, spleen, and leukocyte and plays a role in

Target Details

lipid metabolism. Two isoforms have been described.

Molecular Weight: 52251

Gene ID: 10917

NCBI Accession: [NP_932079](#)

UniProt: [Q6UXE8](#)

Application Details

Application Notes: WB: 1:1000. FC: 1:10~50

Restrictions: For Research Use only

Handling

Format: Liquid

Buffer: Purified polyclonal antibody supplied in PBS with 0.09 % (W/V) sodium azide.

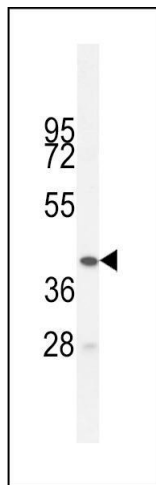
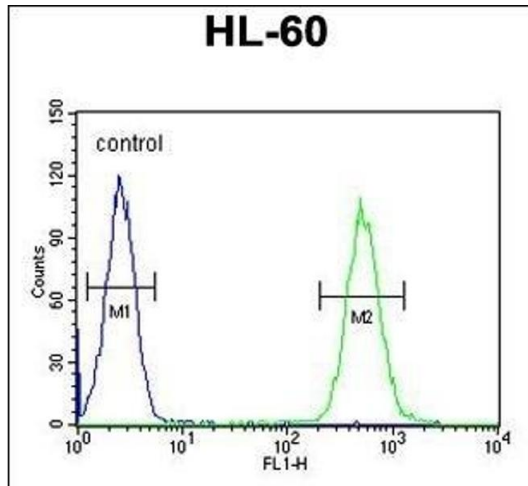
Preservative: Sodium azide

Precaution of Use: This product contains Sodium azide: a POISONOUS AND HAZARDOUS SUBSTANCE which should be handled by trained staff only.

Storage: 4 °C,-20 °C

Storage Comment: Maintain refrigerated at 2-8 °C for up to 6 months. For long term storage store at -20 °C in small aliquots to prevent freeze-thaw cycles.

Expiry Date: 6 months



Flow Cytometry

Image 1. BTNL3 Antibody (C-term) (ABIN654857 and ABIN2844519) flow cytometric analysis of HL-60 cells (right histogram) compared to a negative control cell (left histogram). FITC-conjugated goat-anti-rabbit secondary antibodies were used for the analysis.

Western Blotting

Image 2. BTNL3 Antibody (C-term) (ABIN654857 and ABIN2844519) western blot analysis in HL-60 cell line lysates (35 µg/lane). This demonstrates the BTNL3 antibody detected the BTNL3 protein (arrow).