



[Go to Product page](#)

Datasheet for ABIN654858
anti-EFHB antibody (N-Term)

3 Images

Overview

Quantity:	400 µL
Target:	EFHB
Binding Specificity:	AA 1-30, N-Term
Reactivity:	Human
Host:	Rabbit
Clonality:	Polyclonal
Conjugate:	This EFHB antibody is un-conjugated
Application:	Western Blotting (WB), Flow Cytometry (FACS), Immunohistochemistry (Paraffin-embedded Sections) (IHC (p))

Product Details

Immunogen:	This EFHB antibody is generated from rabbits immunized with a KLH conjugated synthetic peptide between 1-30 amino acids from the N-terminal region of human EFHB.
Clone:	RB28585
Isotype:	Ig Fraction
Purification:	This antibody is purified through a protein A column, followed by peptide affinity purification.

Target Details

Target:	EFHB
Alternative Name:	EFHB (EFHB Products)

Target Details

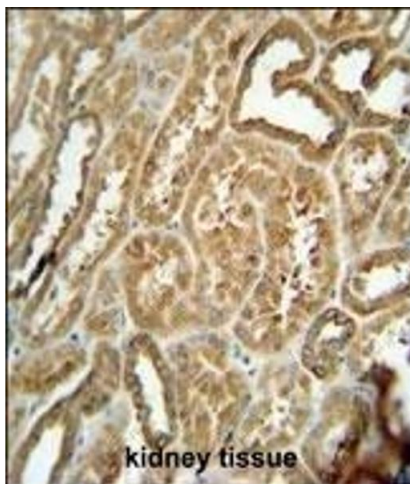
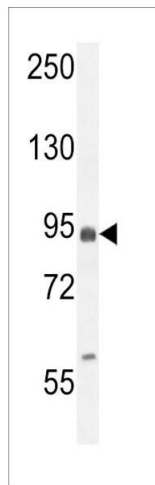
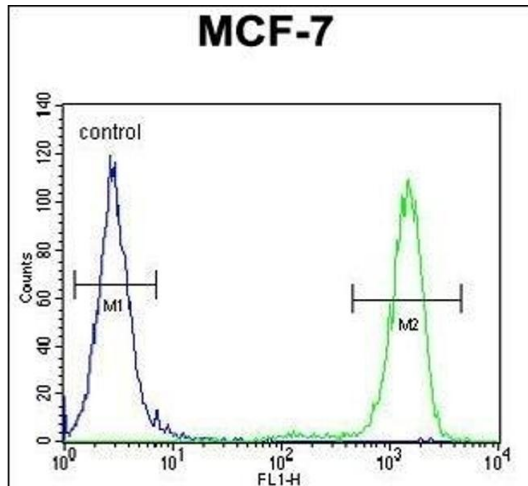
Background:	EFHB contains two EF-hand domains. There are three named isoforms.
Molecular Weight:	93802
Gene ID:	151651
NCBI Accession:	NP_653316
UniProt:	Q8N7U6

Application Details

Application Notes:	WB: 1:1000. IHC-P: 1:50~100. FC: 1:10~50
Restrictions:	For Research Use only

Handling

Format:	Liquid
Buffer:	Purified polyclonal antibody supplied in PBS with 0.09 % (W/V) sodium azide.
Preservative:	Sodium azide
Precaution of Use:	This product contains Sodium azide: a POISONOUS AND HAZARDOUS SUBSTANCE which should be handled by trained staff only.
Storage:	4 °C,-20 °C
Storage Comment:	Maintain refrigerated at 2-8 °C for up to 6 months. For long term storage store at -20 °C in small aliquots to prevent freeze-thaw cycles.
Expiry Date:	6 months



Flow Cytometry

Image 1. EFHB Antibody (N-term) (ABIN654858 and ABIN2844520) flow cytometric analysis of MCF-7 cells (right histogram) compared to a negative control cell (left histogram). FITC-conjugated goat-anti-rabbit secondary antibodies were used for the analysis.

Western Blotting

Image 2. EFHB Antibody (N-term) (ABIN654858 and ABIN2844520) western blot analysis in MCF-7 cell line lysates (35 µg/lane). This demonstrates the EFHB antibody detected the EFHB protein (arrow).

Immunohistochemistry (Paraffin-embedded Sections)

Image 3. EFHB antibody (N-term) (ABIN654858 and ABIN2844520) immunohistochemistry analysis in formalin fixed and paraffin embedded human kidney tissue followed by peroxidase conjugation of the secondary antibody and DAB staining. This data demonstrates the use of the EFHB antibody (N-term) for immunohistochemistry. Clinical relevance has not been evaluated.