



Datasheet for ABIN654870  
**anti-NKPD1 antibody (C-Term)**



[Go to Product page](#)

3 Images

Overview

Quantity:	400 µL
Target:	NKPD1
Binding Specificity:	AA 532-560, C-Term
Reactivity:	Human, Mouse
Host:	Rabbit
Clonality:	Polyclonal
Conjugate:	This NKPD1 antibody is un-conjugated
Application:	Western Blotting (WB), Flow Cytometry (FACS)

Product Details

Immunogen:	This NKPD1 antibody is generated from rabbits immunized with a KLH conjugated synthetic peptide between 532-560 amino acids from the C-terminal region of human NKPD1.
Clone:	RB28758
Isotype:	Ig Fraction
Purification:	This antibody is purified through a protein A column, followed by peptide affinity purification.

Target Details

Target:	NKPD1
Alternative Name:	NKPD1 ( <a href="#">NKPD1 Products</a> )
Molecular Weight:	67780

## Target Details

UniProt: [Q17RQ9](#)

## Application Details

Application Notes: WB: 1:1000. WB: 1:1000. FC: 1:10~50

Restrictions: For Research Use only

## Handling

Format: Liquid

Buffer: Purified polyclonal antibody supplied in PBS with 0.09 % (W/V) sodium azide.

Preservative: Sodium azide

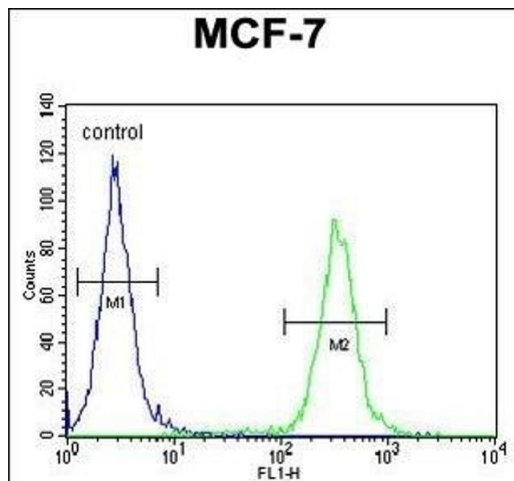
Precaution of Use: This product contains Sodium azide: a POISONOUS AND HAZARDOUS SUBSTANCE which should be handled by trained staff only.

Storage: 4 °C,-20 °C

Storage Comment: Maintain refrigerated at 2-8 °C for up to 6 months. For long term storage store at -20 °C in small aliquots to prevent freeze-thaw cycles.

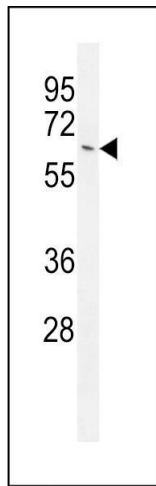
Expiry Date: 6 months

## Images



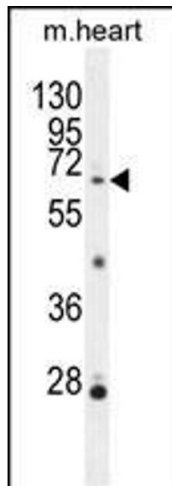
### Flow Cytometry

**Image 1.** NKPD1 Antibody (C-term) (ABIN654870 and ABIN2844528) flow cytometric analysis of MCF-7 cells (right histogram) compared to a negative control cell (left histogram). FITC-conjugated goat-anti-rabbit secondary antibodies were used for the analysis.



### Western Blotting

**Image 2.** NKPD1 Antibody (C-term) (ABIN654870 and ABIN2844528) western blot analysis in MCF-7 cell line lysates (35 µg/lane). This demonstrates the NKPD1 antibody detected the NKPD1 protein (arrow).



### Western Blotting

**Image 3.** NKPD1 Antibody (C-term) (ABIN654870 and ABIN2844528) western blot analysis in mouse heart tissue lysates (35 µg/lane). This demonstrates the NKPD1 antibody detected the NKPD1 protein (arrow).