

Datasheet for ABIN654873

anti-SOHLH1 antibody (N-Term)**3** Images[Go to Product page](#)

Overview

Quantity:	400 µL
Target:	SOHLH1
Binding Specificity:	AA 40-68, N-Term
Reactivity:	Human
Host:	Rabbit
Clonality:	Polyclonal
Conjugate:	This SOHLH1 antibody is un-conjugated
Application:	Western Blotting (WB), Flow Cytometry (FACS), Immunohistochemistry (Paraffin-embedded Sections) (IHC (p))

Product Details

Immunogen:	This SOHLH1 antibody is generated from rabbits immunized with a KLH conjugated synthetic peptide between 40-68 amino acids from the N-terminal region of human SOHLH1.
Clone:	RB28766
Isotype:	Ig Fraction
Purification:	This antibody is purified through a protein A column, followed by peptide affinity purification.

Target Details

Target:	SOHLH1
Alternative Name:	SOHLH1 (SOHLH1 Products)

Target Details

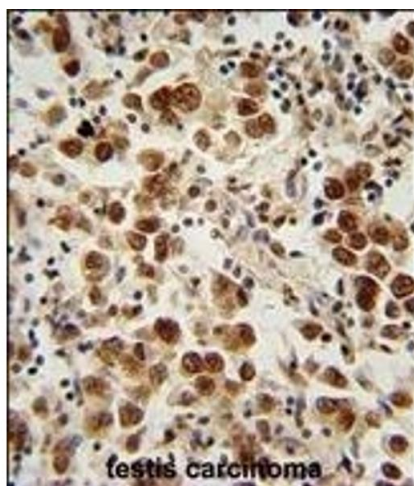
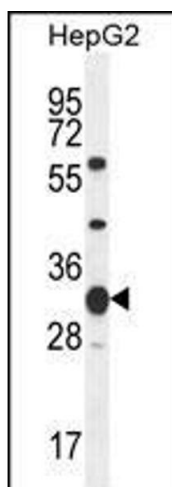
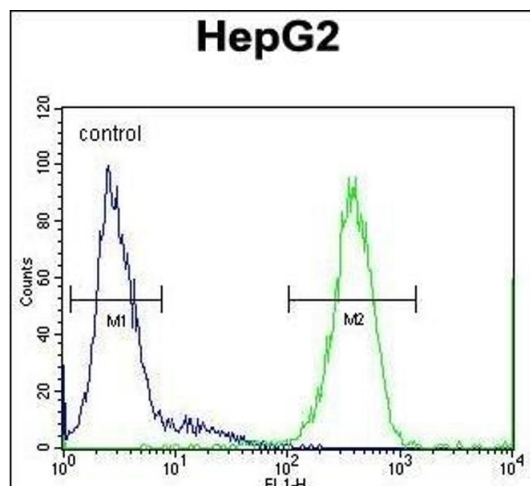
Background:	Probable transcription factor required during spermatogenesis and oogenesis (By similarity).
Molecular Weight:	34526
Gene ID:	402381
NCBI Accession:	NP_001012415 , NP_001095147
UniProt:	Q5JUK2

Application Details

Application Notes:	WB: 1:1000. IHC-P: 1:50~100. FC: 1:10~50
Restrictions:	For Research Use only

Handling

Format:	Liquid
Buffer:	Purified polyclonal antibody supplied in PBS with 0.09 % (W/V) sodium azide.
Preservative:	Sodium azide
Precaution of Use:	This product contains Sodium azide: a POISONOUS AND HAZARDOUS SUBSTANCE which should be handled by trained staff only.
Storage:	4 °C,-20 °C
Storage Comment:	Maintain refrigerated at 2-8 °C for up to 6 months. For long term storage store at -20 °C in small aliquots to prevent freeze-thaw cycles.
Expiry Date:	6 months



Flow Cytometry

Image 1. SOHLH1 Antibody (N-term) (ABIN654873 and ABIN2844530) flow cytometric analysis of HepG2 cells (right histogram) compared to a negative control cell (left histogram). FITC-conjugated goat-anti-rabbit secondary antibodies were used for the analysis.

Western Blotting

Image 2. SOHLH1 Antibody (N-term) (ABIN654873 and ABIN2844530) western blot analysis in HepG2 cell line lysates (35 µg/lane). This demonstrates the SOHLH1 antibody detected the SOHLH1 protein (arrow).

Immunohistochemistry (Paraffin-embedded Sections)

Image 3. SOHLH1 Antibody (N-term) (ABIN654873 and ABIN2844530) immunohistochemistry analysis in formalin fixed and paraffin embedded human testis carcinoma followed by peroxidase conjugation of the secondary antibody and DAB staining. This data demonstrates the use of the SOHLH1 Antibody (N-term) for immunohistochemistry. Clinical relevance has not been evaluated.