



Datasheet for ABIN654875
anti-C11orf53 antibody (C-Term)



[Go to Product page](#)

3 Images

Overview

Quantity:	400 µL
Target:	C11orf53
Binding Specificity:	AA 187-215, C-Term
Reactivity:	Human
Host:	Rabbit
Clonality:	Polyclonal
Conjugate:	This C11orf53 antibody is un-conjugated
Application:	Western Blotting (WB), Flow Cytometry (FACS), Immunohistochemistry (Paraffin-embedded Sections) (IHC (p))

Product Details

Immunogen:	This C11orf53 antibody is generated from rabbits immunized with a KLH conjugated synthetic peptide between 187-215 amino acids from the C-terminal region of human C11orf53.
Clone:	RB28769
Isotype:	Ig Fraction
Purification:	This antibody is purified through a protein A column, followed by peptide affinity purification.

Target Details

Target:	C11orf53
Alternative Name:	C11orf53 (C11orf53 Products)

Target Details

Background: The specific function of C11orf53 remains unknown.

Molecular Weight: 25393

Gene ID: 341032

NCBI Accession: [NP_940900](#)

UniProt: [Q8IXP5](#)

Application Details

Application Notes: WB: 1:1000. IHC-P: 1:50~100. FC: 1:10~50

Restrictions: For Research Use only

Handling

Format: Liquid

Buffer: Purified polyclonal antibody supplied in PBS with 0.09 % (W/V) sodium azide.

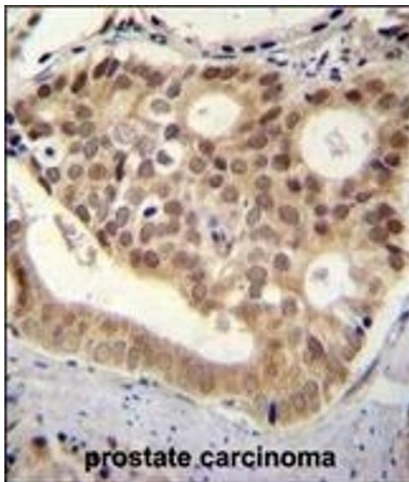
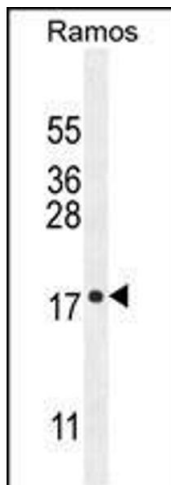
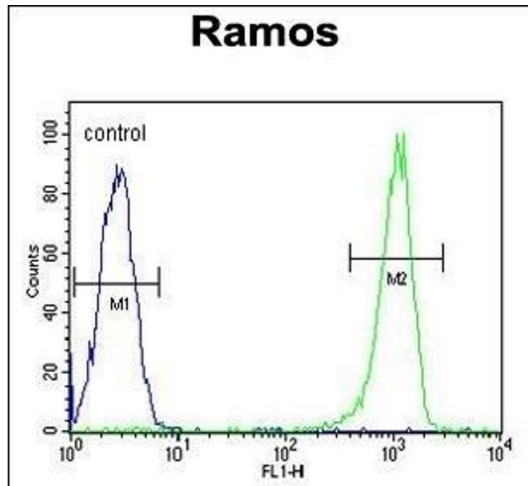
Preservative: Sodium azide

Precaution of Use: This product contains Sodium azide: a POISONOUS AND HAZARDOUS SUBSTANCE which should be handled by trained staff only.

Storage: 4 °C, -20 °C

Storage Comment: Maintain refrigerated at 2-8 °C for up to 6 months. For long term storage store at -20 °C in small aliquots to prevent freeze-thaw cycles.

Expiry Date: 6 months



Flow Cytometry

Image 1. C11orf53 Antibody (C-term) (ABIN654875 and ABIN2844531) flow cytometric analysis of Ramos cells (right histogram) compared to a negative control cell (left histogram). FITC-conjugated goat-anti-rabbit secondary antibodies were used for the analysis.

Western Blotting

Image 2. C11orf53 Antibody (C-term) (ABIN654875 and ABIN2844531) western blot analysis in Ramos cell line lysates (35 µg/lane). This demonstrates the C11orf53 antibody detected the C11orf53 protein (arrow).

Immunohistochemistry (Paraffin-embedded Sections)

Image 3. C11orf53 antibody (C-term) (ABIN654875 and ABIN2844531) immunohistochemistry analysis in formalin fixed and paraffin embedded human pancreas tissue followed by peroxidase conjugation of the secondary antibody and DAB staining. This data demonstrates the use of C11orf53 antibody (C-term) for immunohistochemistry. Clinical relevance has not been evaluated.