

Datasheet for ABIN654879
anti-VPS52 antibody (C-Term)[Go to Product page](#)

4 Images

Overview

Quantity:	400 µL
Target:	VPS52
Binding Specificity:	AA 610-637, C-Term
Reactivity:	Human
Host:	Rabbit
Clonality:	Polyclonal
Conjugate:	This VPS52 antibody is un-conjugated
Application:	Western Blotting (WB), Immunofluorescence (IF), Flow Cytometry (FACS), Immunohistochemistry (Paraffin-embedded Sections) (IHC (p))

Product Details

Immunogen:	This VPS52 antibody is generated from rabbits immunized with a KLH conjugated synthetic peptide between 610-637 amino acids from the C-terminal region of human VPS52.
Clone:	RB25452
Isotype:	Ig Fraction
Predicted Reactivity:	M, Rat
Purification:	This antibody is purified through a protein A column, followed by peptide affinity purification.

Target Details

Target:	VPS52
---------	-------

Target Details

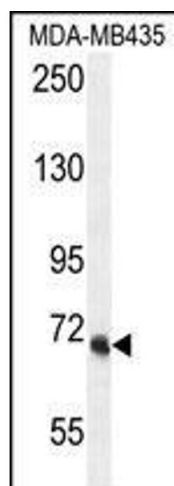
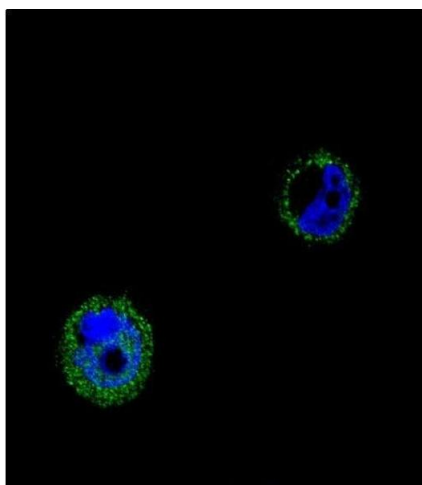
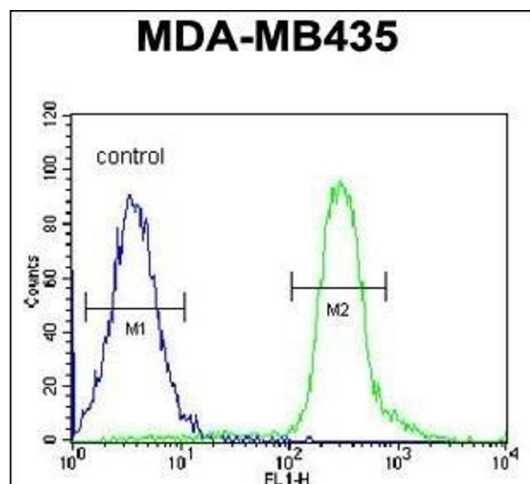
Alternative Name:	VPS52 (VPS52 Products)
Background:	<p>This gene encodes a protein that is similar to the yeast suppressor of actin mutations 2 gene. The yeast protein forms a subunit of the tetrameric Golgi-associated retrograde protein complex that is involved in vesicle trafficking from from both early and late endosomes, back to the trans-Golgi network. This gene is located on chromosome 6 in a head-to-head orientation with the gene encoding ribosomal protein S18.</p>
Molecular Weight:	82221
Gene ID:	6293
NCBI Accession:	NP_072047
UniProt:	Q8N1B4

Application Details

Application Notes:	IF: 1:10~50. WB: 1:1000. IHC-P: 1:50~100. FC: 1:10~50
Restrictions:	For Research Use only

Handling

Format:	Liquid
Buffer:	Purified polyclonal antibody supplied in PBS with 0.09 % (W/V) sodium azide.
Preservative:	Sodium azide
Precaution of Use:	This product contains Sodium azide: a POISONOUS AND HAZARDOUS SUBSTANCE which should be handled by trained staff only.
Storage:	4 °C,-20 °C
Storage Comment:	Maintain refrigerated at 2-8 °C for up to 6 months. For long term storage store at -20 °C in small aliquots to prevent freeze-thaw cycles.
Expiry Date:	6 months



Flow Cytometry

Image 1. VPS52 Antibody (C-term) (ABIN654879 and ABIN2844533) flow cytometric analysis of MDA-M cells (right histogram) compared to a negative control cell (left histogram). FITC-conjugated goat-anti-rabbit secondary antibodies were used for the analysis.

Immunofluorescence

Image 2. Confocal immunofluorescent analysis of VPS52 Antibody (C-term) (ABIN654879 and ABIN2844533) with MCF-7 cell followed by Alexa Fluor® 488-conjugated goat anti-rabbit IgG (green). DAPI was used to stain the cell nuclear (blue).

Western Blotting

Image 3. VPS52 Antibody (C-term) (ABIN654879 and ABIN2844533) western blot analysis in MDA-M cell line lysates (35 µg/lane). This demonstrates the VPS52 antibody detected the VPS52 protein (arrow).

Please check the [product details page](#) for more images. Overall 4 images are available for ABIN654879.