

Datasheet for ABIN654880

anti-CTBP1 antibody (C-Term)[Go to Product page](#)**2** Images

Overview

Quantity:	400 µL
Target:	CTBP1
Binding Specificity:	AA 409-438, C-Term
Reactivity:	Human, Mouse
Host:	Rabbit
Clonality:	Polyclonal
Conjugate:	This CTBP1 antibody is un-conjugated
Application:	Western Blotting (WB)

Product Details

Immunogen:	This CTBP1 antibody is generated from rabbits immunized with a KLH conjugated synthetic peptide between 409-438 amino acids from the C-terminal region of human CTBP1.
Clone:	RB28436
Isotype:	Ig Fraction
Purification:	This antibody is purified through a protein A column, followed by peptide affinity purification.

Target Details

Target:	CTBP1
Alternative Name:	CTBP1 (CTBP1 Products)
Background:	This gene encodes a protein that binds to the C-terminus of adenovirus E1A proteins. This

Target Details

phosphoprotein is a transcriptional repressor and may play a role during cellular proliferation. This protein and the product of a second closely related gene, CTBP2, can dimerize. Both proteins can also interact with a polycomb group protein complex which participates in regulation of gene expression during development. Alternative splicing of transcripts from this gene results in multiple transcript variants.

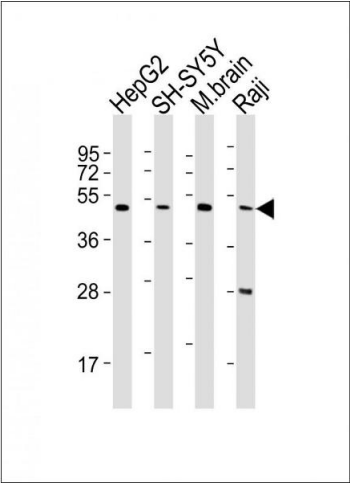
Molecular Weight:	47535
Gene ID:	1487
NCBI Accession:	NP_001012632 , NP_001319
UniProt:	Q13363
Pathways:	Retinoic Acid Receptor Signaling Pathway

Application Details

Application Notes:	WB: 1:1000. WB: 1:2000
Restrictions:	For Research Use only

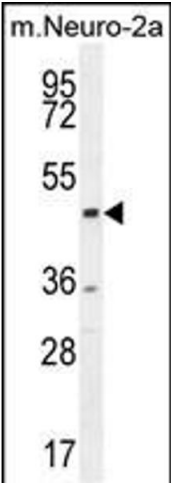
Handling

Format:	Liquid
Buffer:	Purified polyclonal antibody supplied in PBS with 0.09 % (W/V) sodium azide.
Preservative:	Sodium azide
Precaution of Use:	This product contains Sodium azide: a POISONOUS AND HAZARDOUS SUBSTANCE which should be handled by trained staff only.
Storage:	4 °C,-20 °C
Storage Comment:	Maintain refrigerated at 2-8 °C for up to 6 months. For long term storage store at -20 °C in small aliquots to prevent freeze-thaw cycles.
Expiry Date:	6 months



Western Blotting

Image 1. All lanes : Anti-CTBP1 Antibody (C-term) at 1:2000 dilution Lane 1: HepG2 whole cell lysates Lane 2: SH-SY5Y whole cell lysates Lane 3: mouse brain lysates Lane 4: Raji whole cell lysates Lysates/proteins at 20 µg per lane. Secondary Goat Anti-Rabbit IgG, (H+L), Peroxidase conjugated at 1/10000 dilution Predicted band size : 48 kDa Blocking/Dilution buffer: 5 % NFDM/TBST.



Western Blotting

Image 2. CTBP1 Antibody (C-term) (ABIN654880 and ABIN2844534) western blot analysis in mouse Neuro-2a cell line lysates (35 µg/lane). This demonstrates the CTBP1 antibody detected the CTBP1 protein (arrow).