

Datasheet for ABIN654881
anti-NFE2L1 antibody (C-Term)[Go to Product page](#)

1 Image

Overview

Quantity:	400 µL
Target:	NFE2L1
Binding Specificity:	AA 709-738, C-Term
Reactivity:	Human, Mouse
Host:	Rabbit
Clonality:	Polyclonal
Conjugate:	This NFE2L1 antibody is un-conjugated
Application:	Western Blotting (WB)

Product Details

Immunogen:	This NFE2L1 antibody is generated from rabbits immunized with a KLH conjugated synthetic peptide between 709-738 amino acids from the C-terminal region of human NFE2L1.
Clone:	RB27999
Isotype:	Ig Fraction
Predicted Reactivity:	B
Purification:	This antibody is purified through a protein A column, followed by peptide affinity purification.

Target Details

Target:	NFE2L1
Alternative Name:	NFE2L1 (NFE2L1 Products)

Target Details

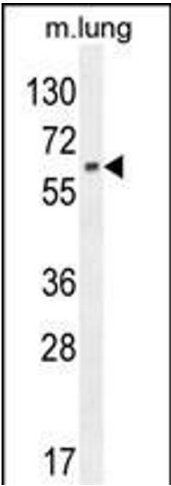
Background:	This gene encodes a protein that is involved in globin gene expression in erythrocytes. Confusion has occurred in bibliographic databases due to the shared symbol of NRF1 for this gene, NFE2L1, and for 'nuclear respiratory factor 1' which has an official symbol of NRF1.
Molecular Weight:	84704
Gene ID:	4779
NCBI Accession:	NP_003195
UniProt:	Q14494

Application Details

Application Notes:	WB: 1:1000
Restrictions:	For Research Use only

Handling

Format:	Liquid
Buffer:	Purified polyclonal antibody supplied in PBS with 0.09 % (W/V) sodium azide.
Preservative:	Sodium azide
Precaution of Use:	This product contains Sodium azide: a POISONOUS AND HAZARDOUS SUBSTANCE which should be handled by trained staff only.
Storage:	4 °C, -20 °C
Storage Comment:	Maintain refrigerated at 2-8 °C for up to 6 months. For long term storage store at -20 °C in small aliquots to prevent freeze-thaw cycles.
Expiry Date:	6 months



Western Blotting

Image 1. NFE2L1 Antibody (C-term) (ABIN654881 and ABIN2844535) western blot analysis in mouse lung tissue lysates (35 µg/lane). This demonstrates the NFE2L1 antibody detected the NFE2L1 protein (arrow).