

Datasheet for ABIN654883
anti-CSH1 antibody (C-Term)

3 Images

1 Publication

[Go to Product page](#)

Overview

Quantity:	400 µL
Target:	CSH1
Binding Specificity:	AA 177-204, C-Term
Reactivity:	Human
Host:	Rabbit
Clonality:	Polyclonal
Conjugate:	This CSH1 antibody is un-conjugated
Application:	Western Blotting (WB), Immunohistochemistry (Paraffin-embedded Sections) (IHC (p))

Product Details

Immunogen:	This CSH1 antibody is generated from rabbits immunized with a KLH conjugated synthetic peptide between 177-204 amino acids from the C-terminal region of human CSH1.
Clone:	RB30083
Isotype:	Ig Fraction
Purification:	This antibody is purified through a protein A column, followed by peptide affinity purification.

Target Details

Target:	CSH1
Alternative Name:	CSH1 (CSH1 Products)
Background:	The protein encoded by this gene is a member of the somatotropin/prolactin family of

Target Details

hormones and plays an important role in growth control. The gene is located at the growth hormone locus on chromosome 17 along with four other related genes in the same transcriptional orientation, an arrangement which is thought to have evolved by a series of gene duplications. Although the five genes share a remarkably high degree of sequence identity, they are expressed selectively in different tissues. Alternative splicing generates additional isoforms of each of the five growth hormones, leading to further diversity and potential for specialization. This particular family member is expressed mainly in the placenta and utilizes multiple transcription initiation sites. Expression of the identical mature proteins for chorionic somatomammotropin hormones 1 and 2 is upregulated during development, although the ratio of 1 to 2 increases by term. Mutations in this gene result in placental lactogen deficiency and Silver-Russell syndrome. [provided by RefSeq].

Gene ID:	1442, 1443
NCBI Accession:	NP_001308 , NP_066271
UniProt:	P01243
Pathways:	Response to Growth Hormone Stimulus

Application Details

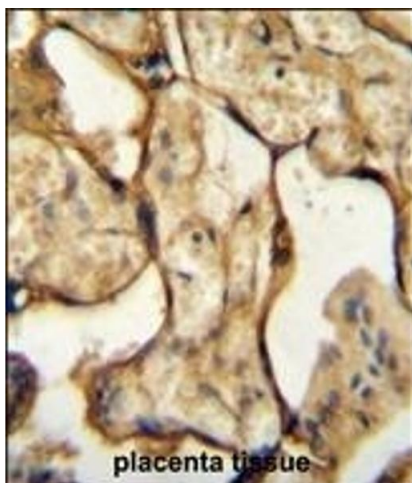
Application Notes:	WB: 1:1000. WB: 1:1000. IHC-P: 1:50~100
Restrictions:	For Research Use only

Handling

Format:	Liquid
Buffer:	Purified polyclonal antibody supplied in PBS with 0.09 % (W/V) sodium azide.
Preservative:	Sodium azide
Precaution of Use:	This product contains Sodium azide: a POISONOUS AND HAZARDOUS SUBSTANCE which should be handled by trained staff only.
Storage:	4 °C,-20 °C
Storage Comment:	Maintain refrigerated at 2-8 °C for up to 6 months. For long term storage store at -20 °C in small aliquots to prevent freeze-thaw cycles.
Expiry Date:	6 months

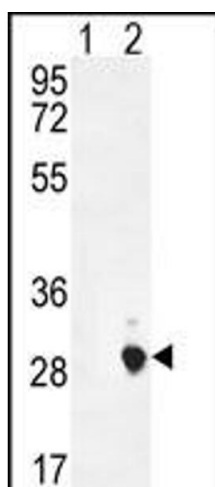
Product cited in: Liszt, Ley, Lieder, Behrens, Stöger, Reiner, Hochkogler, Köck, Marchiori, Hans, Widder, Krammer, Sanger, Somoza, Meyerhof, Somoza: "Caffeine induces gastric acid secretion via bitter taste signaling in gastric parietal cells." in: **Proceedings of the National Academy of Sciences of the United States of America**, Vol. 114, Issue 30, pp. E6260-E6269, (2018) ([PubMed](#)).

Images



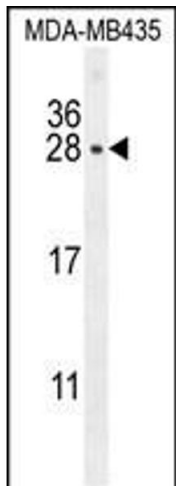
Immunohistochemistry (Paraffin-embedded Sections)

Image 1. CSH1 Antibody (C-term) (ABIN654883 and ABIN2844537) immunohistochemistry analysis in formalin fixed and paraffin embedded human placenta tissue followed by peroxidase conjugation of the secondary antibody and DAB staining. This data demonstrates the use of the CSH1 Antibody (C-term) for immunohistochemistry. Clinical relevance has not been evaluated.



Western Blotting

Image 2. Western blot analysis of CSH1 (arrow) using rabbit polyclonal CSH1 Antibody (C-term) (ABIN654883 and ABIN2844537). 293 cell lysates (2 µg/lane) either nontransfected (Lane 1) or transiently transfected (Lane 2) with the CSH1 gene.



Western Blotting

Image 3. CSH1 Antibody (C-term) (ABIN654883 and ABIN2844537) western blot analysis in MDA-M cell line lysates (35 µg/lane). This demonstrates the CSH1 antibody detected the CSH1 protein (arrow).