

Datasheet for ABIN654885
anti-MRPL51 antibody (C-Term)[Go to Product page](#)

1 Image

Overview

Quantity:	400 µL
Target:	MRPL51
Binding Specificity:	AA 100-128, C-Term
Reactivity:	Human, Mouse
Host:	Rabbit
Clonality:	Polyclonal
Conjugate:	This MRPL51 antibody is un-conjugated
Application:	Western Blotting (WB)

Product Details

Immunogen:	This RM51 antibody is generated from rabbits immunized with a KLH conjugated synthetic peptide between 100-128 amino acids from the C-terminal region of human RM51.
Clone:	RB30111
Isotype:	Ig Fraction
Purification:	This antibody is purified through a protein A column, followed by peptide affinity purification.

Target Details

Target:	MRPL51
Alternative Name:	RM51 (MRPL51 Products)
Background:	Mammalian mitochondrial ribosomal proteins are encoded by nuclear genes and help in protein

Target Details

synthesis within the mitochondrion. Mitochondrial ribosomes (mitoribosomes) consist of a small 28S subunit and a large 39S subunit. They have an estimated 75 % protein to rRNA composition compared to prokaryotic ribosomes, where this ratio is reversed. Another difference between mammalian mitoribosomes and prokaryotic ribosomes is that the latter contain a 5S rRNA. Among different species, the proteins comprising the mitoribosome differ greatly in sequence, and sometimes in biochemical properties, which prevents easy recognition by sequence homology. This gene encodes a 39S subunit protein. Pseudogenes corresponding to this gene are found on chromosomes 4p and 21q.

Molecular Weight: 15095

Gene ID: 51258

NCBI Accession: [NP_057581](#)

UniProt: [Q4U2R6](#)

Application Details

Application Notes: WB: 1:1000

Restrictions: For Research Use only

Handling

Format: Liquid

Buffer: Purified polyclonal antibody supplied in PBS with 0.09 % (W/V) sodium azide.

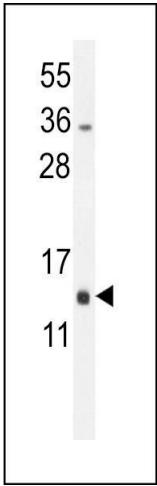
Preservative: Sodium azide

Precaution of Use: This product contains Sodium azide: a POISONOUS AND HAZARDOUS SUBSTANCE which should be handled by trained staff only.

Storage: 4 °C,-20 °C

Storage Comment: Maintain refrigerated at 2-8 °C for up to 6 months. For long term storage store at -20 °C in small aliquots to prevent freeze-thaw cycles.

Expiry Date: 6 months



Western Blotting

Image 1. RM51 Antibody (C-term) (ABIN654885 and ABIN2844538) western blot analysis in mouse bladder tissue lysates (35 µg/lane). This demonstrates the RM51 antibody detected the RM51 protein (arrow).